

*Welcome to my*  
**SANCTUARY POINT A CONCERNED  
CITIZENS NEWSLETTER**

*October 2015 ... Vol. 057*

and web site at

<http://sanctuarypointaconcernedcitizensnewsletter.com>



**The Place Where We  
Call HOME!**



**Shoalhaven Bay and  
Basin Leisure Centre  
Receives AUSTSWIM  
Recognised Swim  
Centre Award  
18th September 2015**

**Congratulations**

**Shoalhaven Council and the  
Bay and Basin Leisure Centre.**





I believe we can be very proud of what has been achieved by the Bay and Basin Leisure Centre and I believe the following words in paragraph 5 below, from our Shoalhaven City Council Mayor, Joanna Gash sums it up with dignity!

**“The award recognises a Swim Centre that has demonstrated excellence, commitment and innovation in the development and delivery of swimming and water safety programs.”**



# Media Release

21 September 2015

## Bay and Basin Leisure Centre receives AUSTSWIM Recognised Swim Centre Award

Shoalhaven City Council Mayor, Joanna Gash has congratulated the staff at the Bay and Basin Leisure Centre after receiving the AUSTSWIM Recognised Swim Centre Award at the NSW Water Safety Awards.

The annual AUSTSWIM awards identify and honour individual AUSTSWIM teachers, presenters and recognised Swim Centres from across the country on their contributions to aquatic education and water safety.

Mayor, Joanna Gash said the award was further recognition of the outstanding professionalism and high level services provided by the staff at the Bay and Basin Leisure Centre.

“I would like to congratulate the hard working staff at the Bay and Basin Leisure Centre after receiving the prestigious AUSTSWIM Recognised Swim Centre Award,” said Cllr Gash.

“The award recognises a Swim Centre that has demonstrated excellence, commitment and innovation in the development and delivery of swimming and water safety programs.

“This award is a credit to the dedication and professionalism of Melissa Opdam who coordinates the Centre’s Learn to swim program and the entire Learn to Swim team at the Bay and Bay Leisure Centre.”

“It is fantastic to see Council again recognised for providing an outstanding service to the local community.”

The Mayor said Council would now be eligible for the National AUSTSWIM Aquatic Industry Awards to be held on the Gold Coast next year.

The NSW Water Safety Awards were held in Lilydale, Sydney on Friday night.

**CONTACT:** Mayor, Joanna Gash - 0427 160 170

Issued by Richard Payne, Media Manager, (02) 4429 3595, 0412 102 790 (mobile)  
richard.payne@shoalhaven.nsw.gov.au, or visit [www.shoalhaven.nsw.gov.au](http://www.shoalhaven.nsw.gov.au) for the media releases



- Chemist
- Newsagency
- Bakery
- Patisserie
- Butcher
- Hair and beauty
- Coffee



# Vincentia Market Place

Leasing Opportunities

Click on the link for leasing



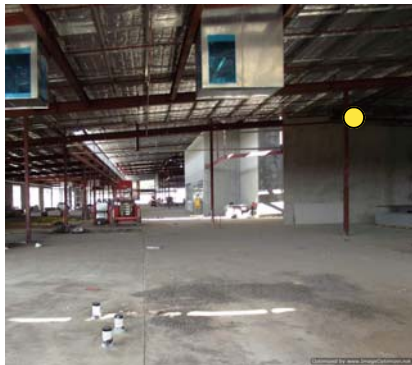
<http://www.woolworthsvincentia.com.au/>



The overall construction of the Vincentia Market Place, in spite of the severe bad weather we have experience this year, is still progressing towards a Christmas 2015 opening. The Aldi store ● has now been handed over to Aldi, for their internal preparations to be completed and the Woolworths store, ● is now



receiving internal preparation by Woolworths and apart from some minor construction clean-up, it also is ready to be handed over to Woolworths, for Woolworth to complete their



internal preparations. The Specialty Shops ● are nearing ready for internal preparations and the Petrol Station ● has commenced being built.

Greening of the water way and overhead bridges ● are in place.

Well done Everyone!  
It's a thumbs up for me!

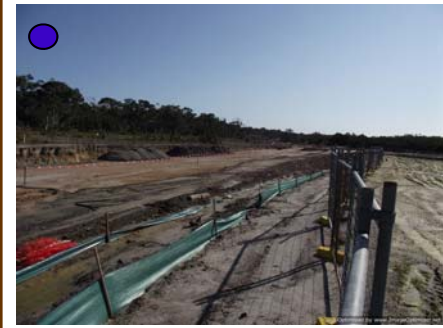


Excuse me if I seem to be praising BMD Construction with their construction of the arterial roadwork, that is so essential for the future flow of Heavy, Domestic and Recreational traffic into, out of and around our future Vincentia Market Place... Well my intention has and always will be, to praise those who have the qualifications and expertise to step up and follow through with what is required for our safety.

We all know that BMD Construction are not just constructing pathways, they are building our future roadways to handle our requirements long into our future, which will sustain our further development in the Bay & Basin, where we will see further managed progress and employment opportunities for our present children and those of the generations to come.



Before being too hasty to criticise, we should take into account the worst weather we have seen for a long time and the starting time of the Jervis Bay and Moona Creek Roads, which were only started late



July 2015.

They don't have umbrellas or air conditioned offices to work in, what you see in these photos are their offices.



● Wool & Jervis Bay Rd.

● Moona Creek Road

● Leisure Centre Access Rd

● Wool Rd near Vincentia High School.

From Me





# Code C 2015 Fancy

# Dress Benefit Night



It is on again in the beautiful Auditorium of the **St Georges Basin Country Club** on the 17th October 2015 and the Gentleman above, the extraordinary Mr Richard (Dick to the many) Manwarring, Code C Coordinator... Who can be seen with appropriate company, will again be bringing to you another wonderful Fancy Dress Benefit Night.

Dick will be raising funding for the running expenses of the Bay & Basin Cancer Centre Patient Transport Bus and other Cancer Related Charities. ( Bring your money with you, you will not be disappointed!).



**The Hon Michael Keenan MP  
Minister for Justice  
Minister Assisting the Prime Minister on Counter-Terrorism**

**Ann Sudmalis MP  
Member for Gilmore**

**JOINT MEDIA RELEASE 1<sup>st</sup> October 2015**

## **Disaster assistance for storm affected communities in New South Wales**

Federal member for Gilmore Ann Sudmalis MP has welcomed today's Commonwealth-State joint announcement that disaster assistance has been activated in response to the August storms which affected the Shoalhaven region.

Minister Keenan announced the funding with NSW Deputy Premier and Minister for Justice and Police Troy Grant under the joint Commonwealth-State Natural Disaster Relief and Recovery Arrangements (NDRRA), which act as a safety net to state and local governments for costs associated with the recovery from a natural disaster.

Mrs Sudmalis said today's announcement will assist storm-affected communities in Gilmore to access the financial support they need to recover from the storms.

"The storms impacted a number of villages, in particular Sussex Inlet, Sanctuary Point and Lake Conjola and I am very proud of the way everyone has rallied to support those affected by the floods. Shoalhaven Council has established some expenditure needs to help these communities rebuild and replace local infrastructure," Mrs Sudmalis said.

In addition, assistance for eligible applicants will be administered by the NSW Government, including:  
personal hardship and distress assistance for affected individuals and families;  
assistance for council counter disaster operations and the restoration of essential public assets;  
concessional interest rate loans for small businesses, primary producers and voluntary not-for-profit bodies; freight subsidies for primary producers; and grants to voluntary not-for-profit bodies.

Mr Keenan said assistance was being provided to the local government areas of Penrith, Shoalhaven, Upper Hunter and Wollongong to ensure these communities can get back on their feet as soon as possible.

"I encourage all those affected by the storms, including individuals, families, small businesses and primary producers, to contact the relevant NSW authorities if they are unsure about their eligibility for assistance," Mr Keenan said. Information on disaster assistance available for this natural disaster can be found on the Australian Government's Disaster Assist website at [www.disasterassist.gov.au](http://www.disasterassist.gov.au) and the NSW Office of Emergency Management's website at [www.emergency.nsw.gov.au](http://www.emergency.nsw.gov.au)

For information on personal hardship and distress assistance, contact the NSW Disaster Welfare Assistance Line on 1800 018 444.

To apply for a concessional loan, grant or freight subsidy, contact the NSW Rural Assistance Authority on 1800 678 593 or visit [www.raa.nsw.gov.au](http://www.raa.nsw.gov.au).

Media contact: Shannen Wilkinson 0476 820 816 (Minister Keenan)  
Kate Ryan 0408 449 117 (Ann Sudmalis MP)



## The Sanctuary Point Men's Shed inc.

President : Ray Marcusson 4447 8634  
 Secretary: Michael Flannery 0422 701 929

To obtain further information about the Mens Shed, you can find them on their website [www.sanctuarypointmenshed.org](http://www.sanctuarypointmenshed.org) Just click and enjoy!

To view their wonderful Carpentry and Wrought Ironwork, you can call into the SANCTUARY POINT MEN'S SHED at 20A WOOLAMAI ROAD, FALLS CREEK NSW (Short distant in from Jervis Bay Road)...

Hours of Business: Monday, Wednesday & Thursday 0900-1600 (9-4) The Men's Shed is all about men, doing what men do best together... Helping each other, to talk and work together, as they live life to the fullest! You too can be a member of the Men's Shed... Give them a call today!

Ray: 4447 8634 or Michael: 0422 701 929

The Sanctuary Point Mens Shed will soon be re-locating to Clifton Park, Sanctuary Point, alongside of the Clifton Community Food Garden. If you join now, you can help them move and become an inaugural member, who helped bring the Mens Shed home to Sanctuary Point.

The Sanctuary Point Men's Shed inc. is a Fully Incorporated Registered Charity and you too, can support them by becoming a Volunteer Member, or making a Donation... All donations over \$2.00 made to SPMS are Tax Deductible.

The above advertisement is proudly inserted by the Editor as a Community Service

**City Maintenance**  
 Help us to Help you!  
 Maintenance & Graffiti Reporting Line  
 Phone: (02) 4429 3506  
 24 hours/day, 7 days/week, and an automated system will record your concern.

**Know this number...**  
 And when you see a maintenance or graffiti problem in the Shoalhaven... Get on the telephone and make the call...  
 (02) 4429 3506

Inserted by The Editor as a Community Service for the concerned citizens of the SHOALHAVEN.

**St Georges Basin Country Club**

Address:  
 11 Paradise Beach Road  
 Sanctuary Point NSW 2540

Our restaurant is under NEW MANAGEMENT....


**East 80 Chains**

**EAST 80 CHAINS Restaurant**

EAST 80 CHAINS RESTAURANT is NOW OPEN. Enjoy a new menu of modern Australian dishes, Seafood & an ever changing 'blackboard' menu. Bookings are not necessary as yet. However if you would like to make a booking they will be taken daily from 12pm. Please contact 4443 0666 & ask to be connected to the restaurant.

\*OPENING HOURS\* Monday-Sunday ~ LUNCH ~ 12PM - 2PM ~ DINNER ~ 5.30PM - 8.30PM

(Please note that these times may change according to demand)



Inserted by the Editor as a community Service.



# JERVIS BAY MARINE RESCUE WOULD WELCOME YOU ON BOARD AS A VOLUNTEER, SAVING LIVES ON THE WATER.

You can visit JERVIS BAY MARINE RESCUE at their Radio Base in Voyager Park, Huskisson, or contact them at Marine Rescue NSW Jervis Bay Unit,



PO Box 93, HUSKISSON NSW 2540

Tel: 02 4441 5433

Fax: 02 4441 5428



Email: base: [jervisbay@marinerescuensw.com](mailto:jervisbay@marinerescuensw.com)

Web Site: <http://marinerescuejervisbay.org.au>

Inserted by the Editor as a Community Service for Marine Rescue Jervis Bay Unit.

For all Enquiries or to REPORT A LEAK  
Phone 4429 3214



<http://www.shoalwater.nsw.gov.au>



Wet wipes are a major cause of sewer blockages. Please, **don't flush** them.



Inserted by the Editor as a community Service for Shoalhaven Water

I am pleased to report on behalf of Shoalhaven Water, that Shoalhaven Water is working with St Georges Basin Country Club and Sanctuary Point Pride Committee to install a drink station at the new Learn to Ride facility in Clifton Road and they are hopeful the project will be installed before summer 2015.

From me this is a thumbs up for Shoalhaven Water, St Georges Basin Country Club and Sanctuary Point Community Pride Committee, showing how Council, Business and Community work together.. For others!



**One Hand Shake at a time!**



## Sanctuary Point A Concerned Citizens Newsletter



If we try together and  
don't give up, we can  
achieve almost anything!

Web Site

[sanctuarypointaconcernedcitizensnewsletter.com](http://sanctuarypointaconcernedcitizensnewsletter.com)



EDITOR: Dennis Williams



If you are reading a hard copy of this current issue and if you would like a copy of previous issues, I can not send you a hard copy, however, If you have access to the internet... Log into my Web Site at

<http://sanctuarypointaconcernedcitizensnewsletter.com>  
for past and current issues - Dennis.

I was recently down at the sea side and took notice of Shoalhaven Council Guide to Resuscitation. I congratulate Shoalhaven Council for erecting these signs at the aquatic areas of our recreation, but! I just thought as this guide is part of the First Aid Training Courses I undertake and is applicable to any instances where First Aid is required, I would include this in my newsletter and perhaps it might one day save a life, or inspire other concerned citizens to undertake a first aid course!

**DANGER**  
Check for danger/ensure area is safe  
• to yourself • to others • to the casualty

**RESPONSE**  
Squeeze the person's shoulders,  
Shout "are you okay?", and check  
for consciousness.

# A Guide to Resuscitation

## A

AIRWAY

**CHECK, OPEN AND CLEAR AIRWAY**

**IF BLOCKED,**

Roll onto side, support head, clear mouth and airway.

**REMEMBER, PHONE 000**

Ask for assistance, phone '000' or mobile '112' for an Ambulance.

## B

BREATHING

**IS CASUALTY BREATHING NORMALLY? 'YES'**

Position person on their side, and ensure the airway remains clear. Continue to monitor breathing.

**IS CASUALTY BREATHING NORMALLY? 'NO'**

Turn person onto back. Support head and jaw. (A slight head tilt may be necessary to open airway) Give two breaths.

## C

COMPRESSION

**CHECK FOR SIGNS OF LIFE**

If no response and not breathing, give **30 compressions in centre of chest.**

**CONTINUE TO GIVE 2 BREATHS AND 30 COMPRESSIONS**

Only stop to check casualty if they start breathing normally. Continue until emergency services take over.

	ADULT	CHILDREN	INFANT
HAND POSITION	2 hands (one on top of the other), in centre of chest	1 or 2 hands in centre of chest	2 fingers in centre of chest
COMPRESS	1/3 the depth of chest		
RATIO	Give 30 compressions at a rate of 100 per minute and then give 2 breaths		
CPR	Repeat 30 compressions and 2 breaths sequence		

Optimized by [www.ImageOptimizer.net](http://www.ImageOptimizer.net)

# St Georges Basin 100 Years!

A little bit of history sent to me from Kathryn White, a retired *library assistant for many years ... Allow me to pass it on to you, in Kathryn's own words, as she so graciously sent it on to me! Thank you Kathryn.*

Dear Dennis,

Greetings! I am a "new citizen" of Sanctuary Point, a retiree having lived here for nearly a year now. I am a regular reader of the Sanctuary Point Concerned Citizens Newsletter and I like researching the local history of the area. I thought the following may be of interest as it does involve a centenary of a land sale October 1915, during World War 1 and the time that it was thought that Jervis Bay would be experiencing huge development and even the (famous) train line connection, which as one noted "we are still waiting for!"....

*the Sydney Morning Herald of 2<sup>nd</sup> October 1915, page 10* carries an interesting advertisement that lists the first subdivision of "MacLean's Point Estate" at St Georges Basin to go to auction at the Pitt Street, Sydney rooms of Richardson & Wrench Auctioneers, Monday 25<sup>th</sup> October at "11.00 am" sharp. Quarter acre blocks with Torrens Title were to be sold.

Amongst other newspapers of the time that listed the same auction included the Illawarra Mercury, Robertson Advocate, South Coast Times and Wollongong Argus, Goulburn Evening Penny Post, The Kiama Independent, Daily Examiner Grafton, Shoalhaven Advertiser, Queanbeyan Leader, The Scrutineer and Ber-rima District Press..

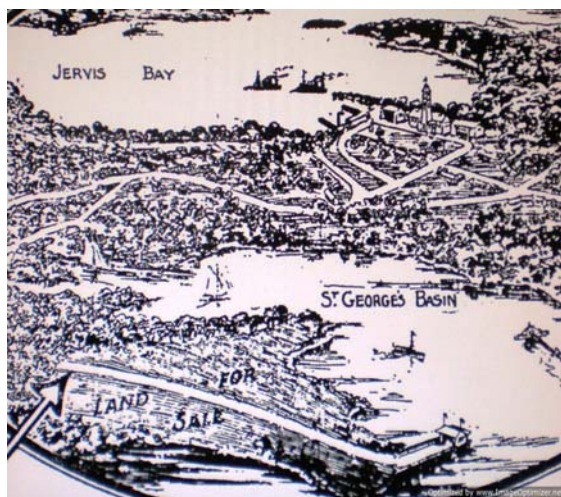
In the "Real Estate Notes of the Week" of the same issue and page, it states that:

*"Jervis Bay has come into prominence, and the subdivision sales, which have taken place in the past show the public are seized with the importance of the locality, and have due regard for its prospective value. Maclean's Point is situated on St. George's Basin, and has an immense water frontage. In this respect it has a value equal with other subdivisions. Those who know St. Georges Basin speak in the highest terms of its delightful facilities for yachting or motor-boating while as a safe bathing centre for the younger people, it has a charm. Investors claim that in the comparatively near future Jervis Bay will be an important centre, not only because of the location of the Naval College and its being the naval base for Australia, but also as the seaside resort of the Federal capital. Maclean's Point is to come under the hammer in the rooms of Messrs. Richardson and Wrench on Monday, October 25. The terms are easy, and Mr. A. Gregg, of Richardson and Wrench, who has inspected the property, is of the opinion that Maclean's Point compares most favourably with any of the Jervis Bay land."*

On 30<sup>th</sup> October 1915 The Shoalhaven News and South Coast Districts Advertiser page 2 stated results of the sale:

*"Jervis Bay Land Sale: Richardson and Wrench, Limited, reported having sold by public auction at their rooms on Monday, 48 lots of first subdivision of Maclean's Point Estate, St. George's Basin, Jervis Bay. Prices realised ranged from £1 7s 6d to 15s per foot for the water frontage blocks, and £37 10s to £12 10s per block for other blocks. The total amount of sales was £1710. Considerable interest was awakened by the sale, and there was a large attendance."*

It is of interest the *names of the streets* listed in the Mitchell Library reference – even though the great development at this time really did not occur, some of our local street names are familiar to us today and can be seen in the original advertisement area as their location (1). Kind Regards Kathryn White .



(1)

1915 Z/TP/J1/20 Maclean's Point Estate - First Subdivision - St George's Basin - Jervis Bay Crown St, Walmer Ave, Greville Ave, Dunisla St, Leumeah St, Frederick St, Ethel St, Percy St, Clifton St, Flora St, Maclean's Point Rd Mon 25th Oct 1915.



**ThinkUKnow** is an Internet safety program delivering interactive training to parents, carers and teachers through schools and organisations across Australia using a network of accredited trainers from our partner agencies.

Created by the UK Child Exploitation and Online Protection (CEOP) Centre, ThinkUKnow Australia has been developed by AFP, Microsoft Australia, Datacom and the Commonwealth

Bank of Australia, supported by the New South Wales Police Force, Northern Territory Police, Queensland Police Service, South Australia Police, Tasmania Police, Western Australia Police and Neighbourhood Watch Australasia.

To get to the website to read about the program and gain access to resources, just simply get onto the Google Net. I just typed in “Think you know” and the site came up. The site is for everyone. I urge all kids and Parents to get on and have a look. There is also a site on Facebook and Twitter. There are a number of fact sheets for parents on the site so you can read and become aware of what to do if your child comes to you with a problem. One problem that comes to mind is cyberbullying. The following is some of the info that you will find in relation to cyberbullying.

Cyberbullying is the repeated use of the internet, mobile phones and other technologies to bully, intimidate and humiliate others. It differs from other bullying because it often continues outside of school and school hours. It can be 24/7 and sometimes you may not know who is behind it. There are a number of reasons why people might cyberbully others which may include; think it’s amusing, don’t like the person, don’t consider it to be a big deal (It’s just word’s), don’t believe that there are any consequences and think they can be anonymous. None of these reasons or any others can justify cyberbullying.

Things that happen on the internet or mobile phones can have offline consequences. Some of the effects cyberbullying may be, Anger, Embarrassment, Fear, Poor performance at school, Loss of confidence and self esteem, Revenge cyberbullying or retaliation, Self harm, even suicide. Cyberbullying hurts people. It can ruin lives. There could even be legal consequences for harassing or threatening someone online.

But what can you do about cyberbullying? Don’t start it, Don’t be part of it, Don’t let it get out of control and Stand up. Be an active bystander and tell a trusted adult if you see cyberbullying occurring. You can stay in control. Learn how to block and report unwanted communications. Find out your School’s policy on cyberbullying, research what policies your internet provider (ISP) and any on line sites and applications you are using have on cyber bullying and definitely tell someone!

Parents, talk to your kids about cyberbullying. Make them aware that they can come to you at any time for advice and help. Kids, know where you can go for help. Speak to an adult you trust if something makes you feel uncomfortable. Everyone, get on the world wide Google net for further information. Just type in [www.thinkuknow.org.au](http://www.thinkuknow.org.au) .

**As always, in case of emergency, call (000).**

**Non Emergencies contact Police Link on 131444 or your local Police.**

**To provide anonymous information call crime stoppers on 1800 333 000.**

**Domestic and Family Violence Info visit [www.police.nsw.gov.au](http://www.police.nsw.gov.au)**

**Shoalhaven Domestic Violence Officers. 44219666 or 44219665**

**Email [shoaladvlo@police.nsw.gov.au](mailto:shoaladvlo@police.nsw.gov.au)**

**Don’t forget. Cops are tops.**

**Information provided by On The Beat & Inserted by the Editor as a Community Service  
for Shoalhaven LAC**

Log on to the NSW Police Web Site for the **“Tell us what you want SURVEY!”**.

SURVEY LOG ON →

<https://secure.peoplepulse.com.au/display.php?mid=2060116b2b887848336>

Shoalhaven Local Area Command Police Telephone Contact List In the case of an Emergency Phone : 000		
Position	Location	Phone Number
Huskisson Police Station	Huskisson	02 44415779
Sussex Inlet Police Station	Sussex Inlet	02 44412665
Nowra Police Station	Nowra – Main switch	02 44219699
Nowra Duty Officer	Nowra Police Station	02 44219689
Detectives Office	Nowra Police Station	02 44219629
Prosecutor	Nowra Police Station	02 44219685
Forensic Services	Nowra Police Station	0244219635
Shoalhaven Traffic Command (Highway Patrol)	Nowra Police Station	02 44219616
Youth Liaison Officer (YLO)	Nowra Police Station	02 44219626
Licensing Officer	Nowra Police Station	02 44219615
Domestic Violence Liaison Officer (DVLO)	Nowra Police Station	02 44219666
Crime Prevention Officer (CPO)	Nowra Police Station	02 44219619
Police Assistance Line (PAL)	PAL	131444
Police Assistance Line (PAL)	PAL TTY	02 92113776
<i>Hearing /speech impaired only</i>		
Crime Stoppers	Crime Stoppers	1800333000
NSW Police Force website address - <a href="http://www.police.nsw.gov.au">www.police.nsw.gov.au</a>		
Shoalhaven LAC Facebook Page - <a href="https://www.facebook.com/ShoalhavenLac">https://www.facebook.com/ShoalhavenLac</a>		

for the **SAFETY OF LIFE AT SEA**

**When you are going on the waters, of the St. Georges Basin... Don't forget to log on and off with Marine Rescue Sussex Inlet, for the safety of your life on the water. (27 MHz Chn: 88 VHF Chn: 16) Or Telephone: 4441 3555.**



The above Notice is inserted by the Editor as a Community Service for



**SUSSEX INLET**

If you think something is Wrong... **Help them to help us!** Contact your Local Police Station... **Or Phone it in when you know it is wrong!**

POLICE ASSISTANCE LINE... 131 444 For reporting of non urgent matters, It will be recorded as an Incident and passed on to the appropriate Police Station to follow up ... It will also become a Statistic and they can be used for the allocation of Police in your local area.

EMERGENCY ... 000 and ask for Police. For Life Threatening or Immediate Attention Required.

CRIME STOPPERS ... 1800 333 000 Anonymous Information.

When you have had enough!... Remember ... If you want to stop Crime... I mean...You really want to stop Crime... Commit yourself to a SIGNED STATEMENT and you will REALLY give your POLICE something to WORK WITH!