

Welcome to my
**SANCTUARY POINT A CONCERNED
CITIZENS NEWSLETTER**

January 2016 ... Vol. 060 and web site at
<http://sanctuarypointaconcernedcitizensnewsletter.com>



5 years old... February 2011 to January 2016

On the next 600 pages I would like to remind you of what has been reported over the last five years... It shouldn't take any longer than a couple of months reading!

Only kidding and that will be my last joke for 2015... So please allow Kate and myself to sincerely hope, that 2016 is not just a year that follows 2015... But! Also a year to allow us to re think our past discretions [the power or right to decide or act according to one's own judgment; freedom of judgment or choice:] and perhaps accept that some of our judgements were wrong and need to be re-considered... Mine included!

After five years of having our say, please accept that what we have said, has been in the interest of our communities and we are pleased to say, that some of you have agreed with what we say and others have other opinions... Freedom of speech is still alive and well in AUSTRALIA and we are PROUD to call AUSTRALIA HOME!

HAPPY NEW YEAR in 2016

Dennis & Kate

Allow me to introduce you to the one person, who in my book, was responsible for the quality of the construction of the Woolworths Vincentia Market Place. Mr Ross Durey, Senior Site Manager for Hutchinson



Builders, who were contracted by Woolworth to deliver the state of the art development of the Vin-

centia Marketplace, that we had the honour and pleasure to witness the opening of, on the 11th December 2015. Of course Mr Durey had a team of professionals behind him and the services of sub contractors brought in, but! Any over runs, failure to complete, accidents, faults, delays and any other failures, finishes up on his shoulders as the site man in

charge! Having said that! He therefore must be the person, for the accolades of a job well done and I take my hat off to you Ross Durey and congratulate you for the outstanding perseverance, under atrocious weather conditions,

of professionalism and tenacity to bring this project in, slightly before target I believe and from Kate and Me! You have our thumbs up! Well Done Ross!



And just in case we have forgotten who Ross Durey works for, allow me to remind you of the pedigree of the company he Calls "Work," Hutchinson Builders, they are the one who built this for Woolworths!

Hutchinson Builders is one of Australia's largest privately-owned building and construction companies.

Established in 1912 our heritage has been forged by a century of service to the construction industry and is testament to the company's commitment, expertise and integrity in all that we do. Hutchinson Builders' turnover for FY2015 is expected to exceed \$1.5B and we employ more than 1300 staff, with projects as diverse in purpose as they are in location.

Projects undertaken by the company include commercial and residential high-rise, mining and resources industry infrastructure projects, industrial, sporting, health, government, retail, education, hotels, clubs, tourism, civil works and modular construction, particularly student and resource sectors accommodation.

With its headquarters in Brisbane, Hutchinson Builders now has a network of offices throughout Australia that reaches from Cairns to Hobart, the Bowen Basin to the Pilbara and Sydney to Perth. The company is also establishing a presence in New Zealand.



THE OPENING

11th December 2015



VINCENTIA MARKET PLACE



The first sod turning 28th January 2015



The official opening on the 11th December 2015

How sweet is this, the following email I received by the first customer.

Dear Dennis,

Yes I was in the audience but missed out on meeting you. I thought you may like the "special piece of history" attached for this very special day for us all.... yes, the first customer receipt.... "Making memories count" as I so love, I went straight in, as the doors opened went straight to the counter and bought a KIT KAT! As you can see I was the first customer and have a signature as well as the time and date on the bottom. *After all, it is a very SWEET day for us all!...* I thought you may like to use the historic receipt with your "Grand Opening Special" which I am sure will be our next Sanctuary Point A Concerned Citizens Newsletter.... You have kept us updated & positive throughout it all!...

Kind Regards

Kathryn White

First Customer
11.12.15.
the fresh food people
Woolworths

Vincentia 0244282500
Store Manager is :Craig
WOOLWORTHS TAX INVOICE - ABN 88 000 014 675

*NESTLE BAR KIT KAT ORIGINAL 45G	\$ 1.00^
1 SUBTOTAL	\$1.00
TOTAL	\$1.00
CASH	\$5.00
CHANGE	\$4.00

* Taxable Items	
TOTAL includes GST	\$0.09
OTHER SAVINGS	1.00

***** MORE SAVINGS EVERYDAY *****
TOTAL SAVINGS \$ 1.00

\$\$\$\$ JOIN WOOLWORTHS REWARDS \$\$\$\$
Earn Woolworths Dollars to get money off
when you shop in store. Join for FREE at
woolworthsrewards.com.au

STORE 1102 POS 010 TRANS 0007 0058 8:30 11/12/15

Allow me to also remind you of the other team of professionals, who helped towards the Grand Opening of the Woolworths Vincentia Market Place...

BMD Constructions, who were responsible for providing the access roadways, on time for the official opening. First photo Shows the BMD Project Manager, Mr Ziggy Vilimec, with two of his staff at the official opening and at right is a group photo of the team at Vincenia High School.



of his staff at the official opening and at right is a group photo of the team at Vincenia High School.



Ziggy is also shown at the entrance to the Vincentia Market Place, with a gentleman who is affectionately known by both Construction Teams, as "Con the Goat Farmer," who also took pride in keeping watch over the construction work, during the construction of the wonderful facilities we have today!

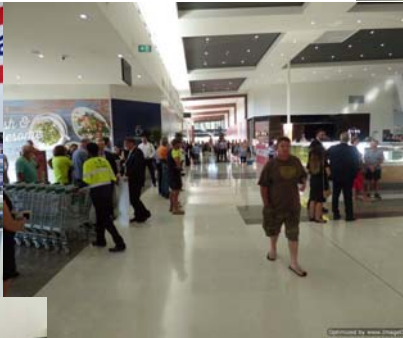
We WELCOME you TO THE BAY & BASIN, the place where we call HOME!



Thank You and Well Done!



Welcome to Woolworths the Fresh Food People and their State of the Art **VINCENTIA MARKET PLACE.**





The Sanctuary Point Men's Shed inc.

President : Ray Marcusson 4447 8634
 Secretary: Michael Flannery 0422 701 929

To obtain further information about the Mens Shed, you can find them on their website www.sanctuarypointmenshed.org Just click and enjoy!

To view their wonderful Carpentry and Wrought Ironwork, you can call into the SANCTUARY POINT MEN'S SHED at 20A WOOLAMAI ROAD, FALLS CREEK NSW (Short distant in from Jervis Bay Road)... Hours of Business: Monday, Wednesday & Thursday 0900-1600 (9-4) The Men's Shed is all about men, doing what men do best together... Helping each other, to talk and work together, as they live life to the fullest! You too can be a member of the Men's Shed... Give them a call today!

Ray: 4447 8634 or Michael: 0422 701 929

The Sanctuary Point Mens Shed will soon be re-locating to Clifton Park, Sanctuary Point, alongside of the Clifton Community Food Garden. If you join now, you can help them move and become an inaugural member, who helped bring the Mens Shed home to Sanctuary Point.

The Sanctuary Point Men's Shed inc. is a Fully Incorporated Registered Charity and you too, can support them by becoming a Volunteer Member, or making a Donation... All donations over \$2.00 made to SPMS are Tax Deductible.

The above advertisement is proudly inserted by the Editor as a Community Service

For all Enquiries or to REPORT A LEAK
 Phone 4429 3214



<http://www.shoalwater.nsw.gov.au>

Inserted by the Editor as a community Service for Shoalhaven Water

City Maintenance

Help us to Help you!

Maintenance & Graffiti Reporting Line
 Phone: (02) 4429 3506

24 hours/day, 7 days/week, and an automated system will record your concern.

Know this number... And when you see a maintenance or graffiti problem in the Shoalhaven... Get on the telephone and make the call...

(02) 4429 3506

Inserted by The Editor as a Community Service for the concerned citizens of the SHOALHAVEN.

Sanctuary Point A Concerned Citizens Newsletter

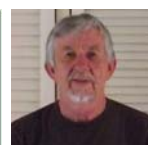


If we try together and don't give up, we can achieve almost anything!

Web Site
sanctuarypointaconcernedcitizensnewsletter.com



EDITOR: Dennis Williams



If you are reading a hard copy of his current issue and if you would like a copy of previous issues, I can not send you a hard copy, however, If you have access to the internet... Log into my Web Site at

<http://sanctuarypointaconcernedcitizensnewsletter.com>
 for past and current issues - Dennis.

I have been contacted by Unit Commander Allan Reidy of Marine Rescue Jervis Bay, who has asked me if I would insert a word of thanks on behalf of the Marine Rescue Jervis Bay Volunteers, who wish to thank Woolworths Limited for their support at the new shopping complex.

Allan Reidy, Unit Commander at Marine Rescue Jervis Bay said, "The Management of Woolworths Limited has allowed us to set up a stall to further our fundraising efforts. We have dealt with changing managers as the project progressed from building site to operating shopping centre and nothing went "down the cracks," handovers between responsible managers worked very smoothly. Marine Rescue Jervis Bay Volunteers are working hard to raise funds for a new rescue vessel currently under construction in northern NSW. "Woolies" have demonstrated in very tangible terms, their support for community initiatives such as ours and we appreciate it." Allan said.

Please read the Media Release below, as it is for the safety of everyone on the water and it is what Marine Rescue does best... "Saving Lives at Sea" and just think... that includes "Yours," also!



Please note... Some Marine Rescue Volunteers, Shop at Woolies also!



MARINE RESCUE NSW Media Release



Date: 18 December 2015

Marine Rescue NSW volunteers on alert for holiday boating safety

The summer boating season is the busiest time of year for recreational boating and Marine Rescue NSW volunteers are ready for the increased number of boats and people on the water through the holidays.

The 2015-16 boating season got off to a hazardous start with volunteers from Marine Rescue Units along the NSW coastline responding to 341 calls for assistance in October alone.

Of these, 65 were life-threatening emergencies that could have had serious outcomes without the intervention of Marine Rescue volunteers.

Marine Rescue NSW Commissioner Stacey Tannos, said, "The great majority of all incidents are caused by mechanical or electrical failure. This means that most of these are avoidable by ensuring proper maintenance before taking the boat out for an anticipated great day on the water – especially if the boat hasn't been used since last season."

A typical maintenance problem is dirty fuel in outboard tanks. Not everyone realizes that outboard fuel "goes off" after a relatively short time in the tank. This is a problem ready to happen. Fuel components separate and the fuel loses its ability to combust.

A common occurrence is that the motors may start when the boat is launched but fail to start when ready to come home.

"In fine weather with calm seas, the worst result of the breakdown can be simply an interrupted day. In poor conditions, a breakdown can be life-threatening," said Commissioner Tannos.

"A rigorous boating safety check before launching after a long lay-off can be some of the best insurance a skipper can take for trouble-free boating."

Commissioner Tannos said "We also urge skippers to make sure everyone on board is wearing a lifejacket and to Log On with your local MRNSW volunteers by marine radio or the free *MarineRescue* App for smartphones."

- ENDS -

Photo (BR30): Marine Rescue NSW volunteers ready to respond throughout the holidays

Issued by: Ken McManus – MRNSW Marketing and Media 0411 870 777

Optimized by www.ImageOptimizer.net



JERVIS BAY MARINE RESCUE WOULD WELCOME YOU ON BOARD AS A VOLUNTEER, SAVING LIVES ON THE WATER.

You can visit **JERVIS BAY MARINE RESCUE** at their **Radio Base in Voyager Park, Huskisson**, or contact them at **Marine Rescue NSW Jervis Bay Unit**,



PO Box 93, HUSKISSON NSW 2540

Tel: 02 4441 5433

Fax: 02 4441 5428

Email: base: jervisbay@marinerescuensw.com

Web Site: <http://marinerescuejervisbay.org.au>

Inserted by the Editor as a Community Service for Marine Rescue Jervis Bay Unit.

Don't forget the Duck Derby Race on 23rd January 2016, at Moona Creek Huskisson.



Please purchase a ticket at the Radio Base in Voyager Park or wherever you find them on sale. \$5 a Duck... \$500 for winning duck 1st home.

ANGER
Check for danger, ensure area is safe
- to yourself - to others - to the casualty

RESPONSE
Squeeze the person's shoulders.
Shout "are you okay?" and check for consciousness.

A Guide to Resuscitation

A AIRWAY	CHECK, OPEN AND CLEAR AIRWAY IF BLOCKED, Roll onto side, support head, clear mouth and airway.	REMEMBER, PHONE 000 Ask for assistance, phone '000' or mobile '112' for an Ambulance.
B BREATHING	IS CASUALTY BREATHING NORMALLY? 'YES' Position person on their side, and ensure the airway remains clear. Continue to monitor breathing.	IS CASUALTY BREATHING NORMALLY? 'NO' Turn person onto back. Support head and jaw. (A slight head tilt may be necessary to open airway) Give two breaths.
C COMPRESSION	CHECK FOR SIGNS OF LIFE If no response and not breathing, give 30 compressions in centre of chest.	CONTINUE TO GIVE 2 BREATHS AND 30 COMPRESSIONS Only stop to check casualty if they start breathing normally. Continue until emergency services take over.

	ADULT	CHILDREN	INFANT
HAND POSITION	2 hands (one on top of the other), in centre of chest	1 or 2 hands in centre of chest	2 fingers in centre of chest
COMPRESS	1/3 the depth of chest		
RATIO	Give 30 compressions at a rate of 100 per minute and then give 2 breaths		
CPR	Repeat 30 compressions and 2 breaths sequence		

Optimized by www.ImageOptimizer.net

I was down at the sea side and took notice of Shoalhaven Council Guide to Resuscitation.

I congratulate Shoalhaven Council for erecting these signs at the aquatic areas of our recreation and as this guide is part of the First Aid Training Courses I undertake, it is also applicable to any instances where First Aid is required.

I have include this in my newsletter and perhaps it might one day save a life, or inspire other concerned citizens to undertake a first aid course!

CCTV CAMERAS TURNED ON IN EAST NOWRA



For those who have not noticed that Mrs Ann Sudmalis, our very busy Federal Member of Parliament



for the Gilmore Electorate, has again fulfilled another of her election promises.

When Mrs Sudmalis officially turned on the CCTV Cameras

in East Nowra, this now fulfilled her \$450,000 promise for CCTV Cameras at Kiama, Sanctuary Point, Bomaderry and East Nowra... Thank you Ann Sudmalis MP for lobbying for that extra bit of safety for the citizens



of Gilmore and the continuing lobbying you do in Parliament, for the concerns of all citizens in our Gilmore Communities!

Council to convene workshop to discuss proposed amalgamation with Kiama Council.

Shoalhaven City Council will convene a workshop in early January to discuss the proposed merger with Kiama Municipal Council.

Mayor, Joanna Gash said she was calling on the local community to have their say on the proposed merger.

Information will be available on council's website and will set out the facts, implications and process concerning the proposed merger so the community can make an informed decision.

The Mayor said Council would provide the community with further information on the proposal as it came to hand.

The IPART report, released in October, found local government mergers could save ratepayers almost \$2 billion over the next 20 years. It said those savings could be used to reduce rates or provide better services.

Sudmalis Wins Detox Dollars for Triple Care Farm



The Photo from left to right shows the presentation of the Media Release, that Mrs Ann Sudmalis presented to the Mission Australia's Triple Care Farm. A copy of the release is shown below.

photograph of Triple Care Farm Manager Gabriella Holmes, Federal Member for Gilmore Ann Sudmalis, President and Chair Mission Australia Ewen Crouch and Sir Martin Foundation General Manager Alex Green.

MEDIA RELEASE

Sudmalis Wins Detox Dollars for Triple Care Farm

Federal Member for Gilmore, Ann Sudmalis MP, has fought for and secured an additional \$2 million in funding for Mission Australia's Triple Care Farm.

Mrs Sudmalis held Ice Forums around Gilmore, and said that residents conveyed the dire need for local facilities to treat those suffering addiction in our community.

"I have met with many families, parents and former addicts who have been directly harmed by the consequences of this hideous drug and they say that facilities like Triple Care Farm are essential for us to win this battle," Mrs Sudmalis said.

"Triple Care Farm is on the frontline working against Ice addiction in our community.

"The announcement of the construction of a detox youth facility here is an acknowledgement of their successful strategies. This \$2 million of funding will help hundreds of young people affected by drugs, including Ice and alcohol misuse, get their lives back on track.

"The team at Triple Care Farm have a proven track record in providing tailored programs and ongoing support and I hope other facilities Australia can look at this one as an example on how to succeed.

"The residents who graduate from this facility could not be in better hands. After completing the 12 week residential program, these young people can access the 'Aftercare Programme', offering six months of follow-up and support in the community.

"Triple Care Farm is a state-of-the-heart facility and I believe they are leaders in combatting drugs in our community," said Mrs Sudmalis.

Mission Australia's Triple Care Farm is funded through the Sir David Martin Foundation, with the support of the Department of Health funding and the generous donations of individuals, community and corporate partners.

17 December 2015

Ann Sudmalis 0409 609 463

Our Wish List for 2016

- A decision is made where the Baird Government, promised new Police Station, is to be built in the Bay & Basin! And when it will commence?
- A decision is made where the Baird Government, promised Ambulance Station, is to be built in the Bay & Basin! And when it will commence?
- A decision is made on what actual improvements will be allocated to Palm Beach, Ray Brooks Reserve and the Basin Walk Track at Sanctuary Point! And when they will commence?
- A decision is made on what actual improvements will be allocated to the Roads in Sanctuary Point! And when will it commence?
- A decision is made on what actual improvements will be allocated to the Pathways in Sanctuary Point! And when will it commence?
- A decision is made on when the Roundabout at Kerry Street and Leumeah Street Sanctuary Point will be built!
- A decision is made on when the Roundabout at Kerry Street and Paradise Beach Road Sanctuary Point will be built!
- A decision is made when the proposed upgrade to the John Williams Boat Ramp in Sanctuary Point will commence!
- A decision to build a state of the art Marina at Huskisson, to give first class facilities to encourage the tourist and local boating community to the area!

“And that is just for starters!”



Signs of Intoxication

For most of us the weekend starts on Friday night, we come home, pat the kids, kiss the dog and start to relax. Some may get organized for a night out with the wife, partner or mates. There is no law against having a few cold ones before you go out (As long as you don't drive). Police are not against people having fun in the community including people who are out for the night having a good time in our Pubs, Clubs and Restaurants.

So you've had a great night but unfortunately you may have had a little too much to drink. No great problem, you will either wobble off with the designated driver and get home, Use the wife or Husband for a crutch and walk home or even get the Club bus home. All that you will have in the morning is a sore head and an urge for an egg and Bacon roll. Or will you?

Some people, and I know it's a minority, after drinking become belligerent, quarrelsome or aggressive. Whilst in a Licensed Premises if you display any of these qualities or show signs of intoxication you will be asked to leave. If you are asked to leave you must go immediately. Do not stand there in front of the bouncers arguing the toss, just leave because you can be issued with a fail to quit Infringement notice that will cost you at least \$550. (A Magistrate can increase the penalty tenfold at Court up to \$5500) If you have been asked to leave and you go to avoid the \$550 fine please do not hang about outside. If you do you could face another \$550 fine for Remaining in Vicinity. You must be at least 50m from the peripheral boundary's of the premises including the car parks. If you leave the area and then return within 6 hours you could again be fined \$550 for re-entering the vicinity of a licensed premise. You cannot go back inside the Licensed Premise for 24 hours.

Most people are aware of this however some people just cannot handle their liquor and after being asked to leave the premises they continue to argue. This is when the Police are called. Police attend and are confronted by intoxicated persons shouting reasons why they should be let back in or why they should remain etc. Instead of walking away when asked, sometimes the intoxicated person (male or female) takes it out on the closest Police Officer he/she can find. Starting with abuse and on occasions continuing with an assault. The incident can escalate resulting in someone getting arrested or further action which also results in having to go to Court. Believe me, one of the loneliest places on earth is the witness box at Court.

Remember, it is your actions whilst in public that determines how your night goes. It could cost the price of a meal and a couple of drinks or it could cost you much more in fines and Court costs. We are not the Fun Police as I have been called many times. If we were the Fun Police we would be wearing a clown costume and have a sad clown face painted on our faces. We do our job to protect you so you can go out next Friday night and beyond... Do not Drink and Drive.

Also remember that you can Dob in a Druggie any time you like by contacting Nowra Police or ringing Crime Stoppers.

As always, in case of emergency, call (000).

Non Emergencies contact Police Link on 131444 or your local Police to provide anonymous information call crime stoppers on 1800 333 000.

Domestic and Family Violence Info visit www.police.nsw.gov.au

Shoalhaven Domestic Violence Officers. 44219666 or 44219665

Email shoaladvlo@police.nsw.gov.au

Don't forget. Cops are tops.

Information provided by On The Beat & Inserted by the Editor as a Community Service
for Shoalhaven LAC

Log on to the NSW Police Web Site for the **“Tell us what you want SURVEY!”**.

SURVEY LOG ON →

<https://secure.peoplepulse.com.au/display.php?mid=2060116b2b887848336>

If you think something is Wrong... **Help them to help us!** Contact your Local Police Station... **Or Phone it in when you know it is wrong!**

Shoalhaven Local Area Command Police Telephone Contact List In the case of an Emergency Phone : 000		
Position	Location	Phone Number
Huskisson Police Station	Huskisson	02 44415779
Sussex Inlet Police Station	Sussex Inlet	02 44412665
Nowra Police Station	Nowra – Main switch	02 44219699
Nowra Duty Officer	Nowra Police Station	02 44219689
Detectives Office	Nowra Police Station	02 44219629
Prosecutor	Nowra Police Station	02 44219685
Forensic Services	Nowra Police Station	0244219635
Shoalhaven Traffic Command (Highway Patrol)	Nowra Police Station	02 44219616
Youth Liaison Officer (YLO)	Nowra Police Station	02 44219626
Licensing Officer	Nowra Police Station	02 44219615
Domestic Violence Liaison Officer (DVLO)	Nowra Police Station	02 44219666
Crime Prevention Officer (CPO)	Nowra Police Station	02 44219619
Police Assistance Line (PAL)	PAL	131444
Police Assistance Line (PAL) Hearing /speech impaired only	PAL TTY	02 92113776
Crime Stoppers	Crime Stoppers	1800333000
NSW Police Force website address - www.police.nsw.gov.au		
Shoalhaven LAC Facebook Page - https://www.facebook.com/ShoalhavenLac		

for the **SAFETY OF LIFE AT SEA**

When you are going on the waters, of the St. Georges Basin... Don't forget to log on and off with Marine Rescue Sussex Inlet, for the safety of your life on the water. (27 MHz Chn: 88 VHF Chn: 16) Or Telephone: 4441 3555.



The above Notice is inserted by the Editor as a Community Service for



SUSSEX INLET

POLICE ASSISTANCE LINE... 131 444 For reporting of non urgent matters, It will be recorded as an Incident and passed on to the appropriate Police Station to follow up ... It will also become a Statistic and they can be used for the allocation of Police in your local area.

EMERGENCY ... 000 and ask for Police. For Life Threatening or Immediate Attention Required.

CRIME STOPPERS ... 1800 333 000 Anonymous Information.

When you have had enough!... Remember ... If you want to stop Crime... I mean...You really want to stop Crime... Commit yourself to a SIGNED STATEMENT and you will REALLY give your POLICE something to WORK WITH!

Inserted by the Editor as a Community Service for **Shoalhaven LAC**