

# *Welcome to my **SANCTUARY POINT A CONCERNED CITIZENS NEWSLETTER***

*March 2014 ... Vol. **038***

and web site at  
[sanctuarypointaconcernedcitizensnewsletter.com](http://sanctuarypointaconcernedcitizensnewsletter.com)



**A place where we call Home!**

**When you go out, on the waters of  
the St Georges Basin...Who will you  
**Log on** and **Log off** With?**

**Marine Rescue Sussex Inlet will  
be waiting for your call on:**



**27 MHz Chn: 88      VHF Chn: 16**

**Or Telephone: 4441 3555**

**Let them know for your own safety at sea!**

**Cut this out, laminate it and keep it prominent on your vessel!**

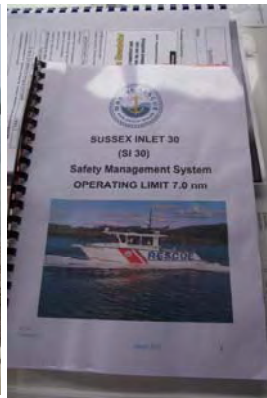


## When a Lady Goes to Sea, she needs to be commissioned and launched with respect!

Marine Rescue Sussex Inlet on Sunday 16th February 2014 held the Commissioning Ceremony of their Rescue Vessel SI 30 "Community Spirit," and the Dedication of their new Wharf extension, with all of the pomp and dignity befitting of a great lady, that is destined to be on the ready, to answer the call, of anyone who is in distress on the waters of the St Georges Basin and beyond.

In appropriate Marine Rescue weather, John Lang Unit Commander Sussex Inlet, expeditiously conducted the respectful ceremony with the assistance of the dignitaries in attendance; Dean Storey, Dep. Commissioner Marine Rescue Ann Sudmalis Federal MP, The Hon Shelley Hancock State MP, Joanna Gash, Mayor of Shoalhaven and Rev. Marty Davis

*"May God bless her and all who sail in her".*



## Sanctuary Point A Concerned Citizens Newsletter



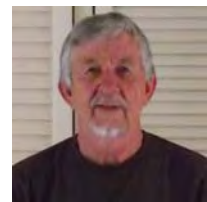
**If we try together and  
don't give up, we can  
achieve almost anything!**

Web Site

[sanctuarypointaconcernedcitizensnewsletter.com](http://sanctuarypointaconcernedcitizensnewsletter.com)



**EDITOR: Dennis Williams**



When you read this current issue and if you would like a copy of previous issues, I can not send you a hard copy, however, If you have access to the internet... Log into my Web Site at

**( [sanctuarypointaconcernedcitizensnewsletter.com](http://sanctuarypointaconcernedcitizensnewsletter.com) )**

for past and future issues - Dennis.

**Modern Healthcare professionals appreciate the overwhelming acceptance from the people of Sanctuary Point and other parts of the Bay & Basin, of our newly appointed Dental Centre within Sanctuary Point and give you our promise, that while we have... ‘Professionals,’ in our name, you can be assured, that the service we give to you, will stand up to the name we practice under! Modern Healthcare professionals.**



**MODERN HEALTHCARE**  
*professionals*

**DENTAL CENTRE**

**Affordable Dentistry**

**Dentistry Services**

- Implants
- Cosmetic Dentistry
- Specialist Dentistry
- Paediatric Dentistry
- General Dentistry
- Restorative Dentistry
- Crown & Bridge
- Teeth Whitening
- Emergency After Hours Service  
(conditions apply enquire within)

**Denture Clinic Services**

- Implant Retained Dentures
- Full Dentures
- Partial Dentures
- Denture Relines
- Dentures Repairs
- Mouthguards
- Local Retirement Home Visits  
(conditions apply, enquire within)

**Affordable Dentistry**

For All Your Dental Needs ☎ **4443 7773**  
[www.modernhealthcareprofessionals.com.au](http://www.modernhealthcareprofessionals.com.au)

Inserted by the Editor as a community Service For **Sanctuary Point Modern Healthcare Professionals**

## **Clean up Australia Day Sanctuary Point**

**A call from Yvette Hopper to join her clean up team on Saturday 8th March at 8.30 am behind the Sanctuary Point Shops, near the Frances Ryan Reserve Sports Building.**



**Please help keep Australia Beautiful.**





## Looking for Work?

### **OSTARA IS AN EMPLOYMENT SERVICE WITH A DIFFERENCE!**

Do you have a disability or illness and need some assistance to get work? Are you lacking self-confidence, have anxiety, depression, feel isolated and lonely?

Ostara provide specialist employment services to people with a mental illness (such as Anxiety, Depression, or Bipolar Affective Disorder) to assist them to obtain and maintain employment.

Ostara Employment Services are strengths based and individualised to meet your needs.

We can help you with:

Resumes  
On the job support

Marketing to employers  
Interview skills

Cover letters  
Job search support

And much more!

Located in the Shoalhaven and have offices in Nowra, Ulladulla and Sanctuary Point.

To find out more about our services, please contact our friendly professional staff.

Nowra  
93 Plunkett St  
Nowra  
Ph: 4423 5407

Ulladulla  
Units 3&4, 16 Wason St  
Ulladulla  
Ph: 4455 7652  
Mob: 0417 132 733

Sanctuary Point  
34 Paradise Beach Rd  
Sanctuary point  
Ph: 4443 9244



The above advertisement, is Inserted by the Editor as a Community Service.



## The Sanctuary Point Men's Shed

can be contacted by calling the President : Colin Loudon On 4447 8634

or going on line at [www.sanctuarypointmenshed.org](http://www.sanctuarypointmenshed.org)

To view their wonderful Carpentry and Wrought Ironwork, you can call into the **SANCTUARY POINT MEN'S SHED** at **20A WOOLLAMIA ROAD, FALLS CREEK NSW** (Short distant in from Jervis Bay Road.)... Hours of Business: Monday, Wednesday & Thursday 0900-1600 (9-4)

Both the metal and wood working, are located on private property at Falls Creek, plans are now in place to bring them home to Clifton Park "SANCTUARY POINT," where together with the **COMMUNITY GARDENS** and a great learn to ride **BICYCLE TRACK** a total community recreation hub, will be available for the whole community to enjoy.

The Sanctuary Point Men's Shed is a Fully Incorporated Registered Charity and they need your support, all donations over \$2.00 made to SPMS are Tax Deductible. The Men's Shed is all about men, doing what men do best together... Helping each other, to talk and work together, as they live life to the fullest!

**You too can be a member of the Men's Shed... Give them a call today!**

**4447 8634**

The above advertisement, is Inserted by the Editor as a Community Service.

We build many and varied things in our shed and hope this gives you some insight into these items.

**Wrought Ironwork**  
**One off carpentry work**  
**Welding**  
**Childrens Playhouse**  
**Minor Restoration**  
**Outdoor Settings**  
**Blanket/Toy boxes**  
**Rocking Cow**  
**Turned Wooden items: Bowls, Plates and etc.**  
**Planter boxes**  
**Rocking Horses**  
**Rocking motor bike**

**SANCTUARY POINT MENS SHED IS A FULLY INCORPORATED, REGISTERED CHARITY**  
**ALL DONATIONS OVER \$2.00 MADE TO SPMS ARE TAX DEDUCTIBLE**

Father Chris Riley is aiming to get youth off the streets.

Fr Riley Photo Source: News Limited



## Former Rosters Captain and NSW State Of Origin Blues warrior, Brad

(Freddy) Fittler is on the road again in raising funds for Hogs for the Homeless 2014 and Freddy and the Hogs dropped off at the St Georges Basin Country Club on the 23rd February 2014 starting their 2014 Fund Raiser.



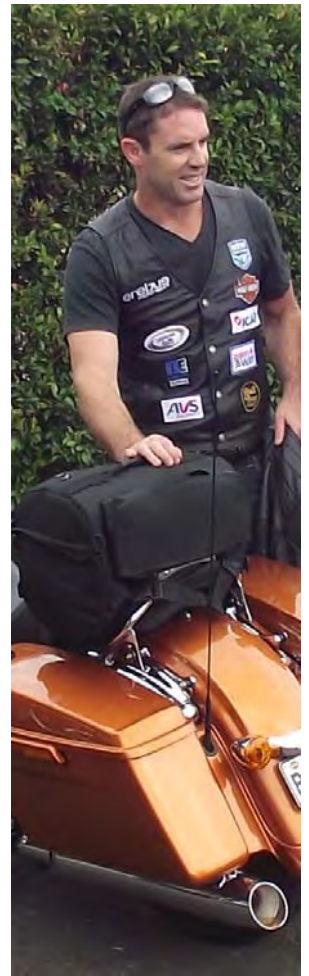
The above photo shows the arrival of, from left to right ; Matt Cooper ~ Brad Fittler ~ Nathan Hindmarsh ~ Bob Richardson & Ian Schubert at the St Georges Basin Country Club, which commenced a round of excitement for the children present and not to mention the adults also, who many of them were seeing their Rugby League Heroes from the battle fields of their former glories.

To donate to the cause or buy a raffle ticket to win a HARLEY go to:

[www.blueshogsforhomeless.com.au](http://www.blueshogsforhomeless.com.au)



Bikes by Harley Davidson





**N**ext time that you have a beef with something not quite right in your street, have a thought of the residents who live in Ragland Street, Culburra Beach.

This innocent looking approach into Ragland Street, off Orient Point Road (Photo at left,) should help put things into perspective, as it did to me, when I was contacted by a couple of residents of the area, who have already been in contact with Council and in one letter received from a council engineer, it was stated **“ I advise that the requirement for fencing the drain was considered during the pre-construction and a determination made that fencing is not required, as the shaping and relining has not increased the risk for pedestrians.**

**While there is an obvious and inherent risk associated with open drains, Council do not have capacity to isolate and remove open drains”.**



Well that may be councils interpretation of listening to the people, but! If I was living in that street, I would feel let down with a council that I pay my rates to. Council decided on a

first time use of this American designed ( perhaps ok for the American snow storms they encounter,) drain in Australia, which was never properly discussed with the residents, as they were inflicted with this unsightly, cheaply constructed, corrugated base and slippery sided poor excuse for a residential populated, footpath alternative storm water displacement control mechanism, in this case of water from one location to another... So if the pipes were well and good enough to be laid to the beginning of Ragland Street, then why would you experiment with the last, maybe kilo-



metre of footpath in front of residential property, with an unknown imported open ,plastic, corrugated stormwater drain and concrete boxed culvert bridges with no railing to prevent accidental falling into the plastic pits below.



**Come on Shoalhaven Council, surely you can**



**have another look at what you have created for the residents in Ragland Street Culburra Beach and pipe the water underground to the river in safety.**



**Give them back a footpath they can use with safety and be**

**aesthetically pleasing to the residents and visitors in this leafy street, where they call home!**

**CASUARINA EQUISETIFOLIA** (Beach she-oak) or by some other names river she-oak, river oak, creek oak, Cunningham Casuarina, ironwood, Australian Pine (English), Casuarine de Cunningham (French), or Pine australiano, Dinode Australia (Spanish)... For this exercise I will simply call it She-Oak...OK! It is a prolific grower in Hawaii and the Pacific Islands and from what I have read of it, it is not going away real soon and certainly not an endangered species of any imagination... It grows like Crazy... Then Council would know that!

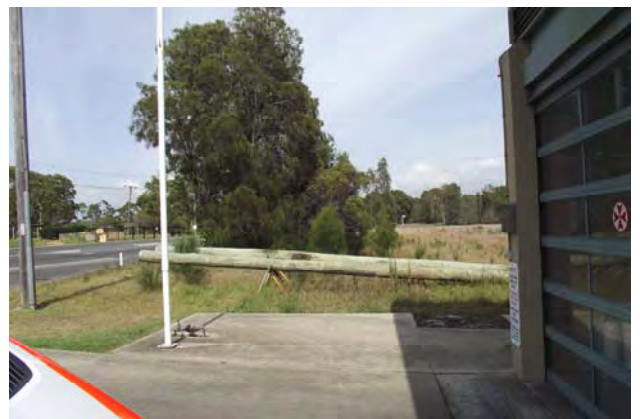
I am appealing to Council on my own behalf for the safety of the Men and Women of the Culburra Beach Ambulance Station, for the removal of the clump of She-Oaks that impede the view of ambulances when they are called out in emergency, when making left or right hand turns when departing the Ambulance Centre.



These trees are remnants from acres of she-oaks which have been removed in the fields next to the ambulance station and medical centre and to make it just that more hazards, a stock pile of telegraph poles have been established between the she-oaks and the ambulance station on one side and the other side of the she-oaks, advertising display boards have been erected to take the oncoming vehicles attention from the sight of the ambulance station they are approaching.



I believe these trees should be re assessed under the new Tree Management Policies and common sense and sensibility should prevail and have these trees removed in respect of the wonderful emergency work that the Ambulance personnel do in our community. One Paramedic Officer I spoke to, said that he was concerned for his safety and this was the case off all who worked out of the Culburra Beach Ambulance Station. Why must this be so!



4 March 2014

## Women in Sport campaign to run throughout March

Shoalhaven City Council will be launching the inaugural Women in Sport campaign from this Saturday 8 March with a host of activities set to take place across the month.

The campaign has been designed to help local women and girls to get more active through the creation of a greater focus on women in sport while also raising the profile of local sporting clubs.

The month long program will include a series of free 'come and try' sporting sessions and open days at local sporting organisations, profiling of the area's many high performing sportswoman and free training opportunities.

As part of the campaign, the area will also host a 'Girls Get Active Schools Gala Day' at the Shoalhaven Basketball Stadium on Wednesday 12 March.

The event will see 200 high school girls from across the Shoalhaven coming together to hear prominent Australian athletes talk about their sporting experiences and achievements followed by participation in sporting activity stations offering skills and modified games from a selection of sports.

Mayor, Joanna Gash said the month long Women in Sport campaign would provide local residents the opportunity to try a host of different sports in a controlled learning environment.

"Shoalhaven City is home to a vibrant and active sporting community across many different disciplines and codes however despite this, women are still underrepresented in official participation numbers," said Cllr Gash.

"The upcoming month long campaign will provide local women and girls with a number of opportunities to participate in a host of different sports and activities.

"The campaign has been designed to provide interested women with the confidence and inspiration to partake in regular sporting competitions or activities."

"Local residents will be provided with the opportunity to trial lawn bowls, tennis, dragonboats, touch football, netball and hockey just to name a few."

"I would certainly encourage local resident to take advantage of the Women in Sport campaign by registering for one of the many activities on offer."

Council has worked in partnership with NSW Sport Recreation, Womensport NSW, The Disability Trust, local media and the Shoalhaven sporting community to develop the program which will be launched as part of International Women's Day celebrations this Saturday 8 March, 2014.

**Shoalhaven Council has distributed their media release for Women in Sport campaign to run through March 2014... Check out the Program below and become a part of the campaign...**

**For further details please contact Community Development Officer Jody Quinnell at Shoalhaven City Council on Fridays on 4429 3456 or Email:**

**jodie.quinnell@shoalhaven.nsw.gov.au**



**FREE COME AND TRY SPORTING SESSIONS**

**SHOALHAVEN WOMEN IN SPORT**

Encouraging girls and women to be more active

Launching on International Women's Day Saturday March 8th, 2014

Girls and women across the Shoalhaven are invited to come along to free come and try sporting sessions. If you've always wanted to try a sport then check out the program below and come along and have some fun.

**PROGRAM**

**SATURDAY, MARCH 8**

**ULLADULLA & DISTRICT NETBALL ASSOCIATION**  
9am - 11.30am. West Ulladulla Sports Park, Ulladulla. Kyle 0412869944

**NOWRA WATER DRAGONS**  
10am-11.30pm. Parringa Park, Shoalhaven River. Robyn 0404 040593

**WELLBEING AND FITNESS EVENT**  
10am - 12pm. Bernie Regan Sporting Complex, North Nowra. Kirsty 0401 763 638

**SUNDAY, MARCH 9**

**MILTON ULLADULLA WOMEN'S BOWLING CLUB**  
10am-11.30pm. Milton Ulladulla Bowling Club, Ulladulla. Senora 0405959314

**MONDAY, MARCH 10**

**NOWRA SHOALHAVEN TOUCH ASSOCIATION**  
5.30 - 6.30pm. Lyrebird Sports Ground, Nowra. Rosemary 0400036753

**WEDNESDAY, MARCH 12**

**MILTON ULLADULLA CROQUET CLUB**  
10am - 12pm. Milton Ulladulla Croquet Club, Milton. Dee 4455 4953

**SATURDAY, MARCH 15**

**HOLLYHOOK BEACH WOMEN'S BOWLING CLUB**  
9.30 - 11.30am. Mallymoock Beach Bowling Club, Mallymoock. Lyn 44558222

**SHOALHAVEN MARINERS BASEBALL**  
10am - 12pm. Ikon Park, South Nowra. Michael 0412239939

**SHOALHAVEN TENNIS ASSOCIATION**  
1-3pm. Nerang Road Tennis Courts, Bomaderry. Phyllis 0419 990 905

**MILTON ULLADULLA TENNIS ASSOCIATION**  
1-4pm. Ulladulla Tennis Courts, Ulladulla. Bev 0412027275

**SUNDAY, MARCH 16**

**NOWRA VELO CLUB FOR CYCLING**  
9-11am at Finders Industrial Complex, Cnr Cumberland St and Tom Thumb Ave, South Nowra. Doug 4421-6597

**SHOALHAVEN CRICKET ASSOCIATION**  
11am - 1pm. Nowra Showground - annual Pink Stumps day from 1pm. Cathy 0403042309

**MILTON ULLADULLA CROQUET CLUB**  
2-4pm. Milton Ulladulla Croquet Club, Milton. Contact Dee Carrington 4455 4953

**MONDAY, MARCH 17**

**NOWRA SHOALHAVEN TOUCH ASSOCIATION**  
5.30 - 6.30pm. Lyrebird Sports Ground, Nowra. Rosemary 0400036753

**TUESDAY, MARCH 18**

**SHOALHAVEN BASKETBALL ASSOCIATION - MOTHER AND DAUGHTER EVENT**  
5.30 - 7.30pm. Shoalhaven Basketball Stadium, Bomaderry. Cheryl 44213800

**TUESDAY, MARCH 25**

**MILTON ULLADULLA BULLDOGS WOMEN'S LEAGUE TAG**  
6-7pm. Mallymoock Oval, Mallymoock. Jo 0488707888

**WEDNESDAY, MARCH 26**

**MILTON ULLADULLA TOUCH ASSOCIATION**  
6 - 7 pm at Froggs Hollow Sports Ground, Milton. Jenny 0415081156

**MILTON ULLADULLA CROQUET CLUB**  
2-4pm at Milton Ulladulla Croquet Club, Milton. Dee 4455 4953

**SUNDAY, MARCH 30**

**MILTON ULLADULLA CROQUET CLUB**  
2-4pm at Milton Ulladulla Croquet Club, Milton. Dee 4455 4953

For more information contact Community Development Officer Jody Quinnell at Shoalhaven City Council on Fridays on 4429 3456 or email jodie.quinnell@shoalhaven.nsw.gov.au



**Bay & Basin Regional Skate Park** Discussions are still taking place after Shoalhaven Council Agreed to build a Regional Skate Park for \$435,000 in the Bay & Basin, as reported in their media release dated 13th May 2010 ( Council discussing proposed works and services for 2010 / 2011 ). The \$435,000 has been provided on page 164 under General Program of the Delivery Program & Operational Plan for 2010—2013 for Regional Skate Park Area 3.

I do not know how much was paid on the Sanctuary Point Local Skate Park, however on the Nambucca Heads Skate Park, I can tell you it was built for \$170,000 in 2009... As for the building of a regional Bay & Basin skate park for \$435,000, I believe it was to get Skateboarders, Community and Council interested in the idea, however from the recent community participation in the Bay & Basin Skate Park voting on the 27th February 2014, which only attracted 91 voters, of which, first & second votes were 44 for the Leisure Centre and 26 for Frances Ryan Reserve, where is the interest when a follow up voting process only attracted 57 voters to decide on a District or a Local Park. ( see these votes below). Too bad the council election voting was not run on the same basis! If you don't like the first vote... Just vote again! I sometime wonder if any one in Council is looking after our Rate Payers money and know what the big issues are that should be attracting Council's attention!

With all this attention being given to an issue, which can only attract 91 voters on the 27th and 57 voters on the 28th February 2014 in the whole of the Bay & Basin where a population of over 17,000 people reside, has anyone thought that the majority of the Youths and Parents of the Bay & Basin are really quite satisfied with the numerous activities available in our region and just maybe, the funding of another skate park in the area, could be put to other community related projects.



Sanctuary Point Local Skate Park

Following is small extract, which I have included from the six page coverage I received of the meeting on the 28th February 2014.



Nambucca Heads District Skate Park

6.30pm – 7.30pm – Café style consultation with circuit rotations at 8 minute intervals x 6 tables – discuss and note positives and negatives of each site + 10 minutes to identify top two sites based on feedback and votes received from submissions and identify and vote on number 1 and 2 preference.

Thirty six RSVPS' were received for the meeting, 57 people turned up. A presentation was given that stated

- Council resolved in January to deliver 1 'district skate park, to be funded by a Federal grant.
- Council has since received information that the preference of the Federal Government is for various local facilities not just 1
- Staff explained the difference between the a district and a local
- Staff provided information on how sites were selected, which now included Larmer Avenue and the exclusion of Huskisson.

During the course of the evening people in attendance asked if the voting could be changed to reflect their preferred site for a district park site and their preferred site for a local park, instead of voting for their top two preferred sites. The facilitator asked each table during the night if they were agreeable to this. The majority of people were agreeable to do this.

PARKING BOARD

\$445, 000 dollars in minutes of St. Georges Basin Forum stated for Skate Park – what happened to that money?

Do it nice – Do it properly

I reside at 2/28 Paradise Beach Road. I have no problem with a skate park to occupy local kids. But I don't want it within 50 – 100 metres of my home. I see and hear what goes on at the one already & I definitely don't want this on my door step. Jean.

Kids in sanctuary Point need a place.

Cost of Berry Skate Park?

The table below shows the votes for each site as a District park and or a Local park by the participants at the meeting.

Site	District Park	Local Park
FRANCES RYAN RESERVE	24	21
BAY & BASIN LEISURE CENTRE	24	27
LARMER AVE	8	7
CLIFTON PARK	1	1
THE WOOL LANE SPORTING COMPLEX	No votes	No Votes
BASIN VIEW BMX TRACK	No Votes	No Votes

The notes below show the positive and negatives for each site on offer that were put forward by the people in attendance at the meeting.



If you think something is Wrong, phone it in on the POLICE ASSISTANCE LINE... call 131 444 It will be recorded as an Incident and passed on to the appropriate Police Station to follow up ... It will also become a Statistic and they can be used for the allocation of Police in your local area.

**Remember...** It will be recorded as an incident in the area where it occurred and when allocating additional resources to an area, priority is usually given to the areas, where phoned in incidents are reported... These indicate where hot spots are and need additional resources!

**HELP THEM! ... HELP US! ...PHONE IT IN! 131 444**

If it is an EMERGENCY ... call 000 and ask for Police.

or CRIME STOPPERS ... call 1800 333 000

When you have had enough! ... Remember ... If you want to stop Crime... I mean...You really want to stop Crime... Commit yourself to a SIGNED STATEMENT and you will REALLY give your POLICE something to WORK WITH!

The above information is inserted by the Editor as a community service.



*The Sanctuary Point Men's Shed is a fully incorporated, registered charity and they have started their long overdue, return to Sanctuary Point... Their journey may be hastened, as they make arrangements to Plan and Build their home base at Clifton Park, Sanctuary Point... If you would like to support them in any way, that may hasten their return, please contact them on 4447 8634 or go on line at: [www.sanctuarypointmenshed.org](http://www.sanctuarypointmenshed.org) and make a donation*

Inserted by the Editor as a Community Service for: **The Sanctuary Point Men's Shed.**

**for the SAFETY OF LIFE AT SEA**

**When you are going on the waters, of the ST GEORGES BASIN ... Don't forget to log on and off with Marine Rescue Sussex Inlet, for the safety of your life on the water. (27 MHz Chn: 88 VHF Chn: 16) Or Telephone: 4441 3555.**

