



Photo of Palm Beach Sanctuary Point NSW... Photo taken by the Editor Dennis Williams 27th Mar 2021.

***SANCTUARY POINT A CONCERNED CITIZENS
NEWSLETTER March 2022 Vol. 134*** and website at
<https://sanctuarypointaconcernedcitizensnewsletter.com>

Shoalhaven, South Coast NSW Events Calendar can be located on the following Link...
<https://www.shoalhaven.com./events/?A=1+March+2022&A=31+March+2022&C=&L=&Y=#read>



Proudly supported by



Reclaim the Night March and March 4 Justice unite

Shoalhaven City Council in partnership with Shoalhaven Women's Health Centre, International Women's Day Shoalhaven, and March 4 Justice South Coast, are inviting the community to take part in a march to advocate for an end to violence against women on the Friday, 4 March 2022 at Nowra Showground.

Violence against women is any act of gender-based violence that causes, or could cause, physical, sexual, or psychological harm or suffering, including threats of harm or coercion, in public or in private.

One in three Australian women (30.5%) have experienced physical violence. One in five Australian women (18.4%) have experienced sexual violence. One in three Australian women (34.2%) have experienced physical and/or sexual violence perpetrated by a man, and almost one in 10 women (9.4%) have experienced violence by a stranger.

According to the Australian Institute, 87% of women have experienced at least one instance of verbal or physical street harassment. For many women, the stress and anxiety that comes when exercising in a public space negates the physical and mental health benefits. It ultimately prevents many from developing stronger social connections and a sense of belonging.

Reclaim the Night marches are an opportunity for women to unite in a show of strength and unity to claim the right to move through public spaces safely. The march will be united, in peace and solidarity as a community with the belief that everyone has the right to feel safe and to be safe.

With postponement of the Shoalhaven Reclaim the Night March in 2021, organisers have been fortunate to be joined by the March 4 Justice South Coast Movement, who remain united to create equality and justice in Australian Society. This follows the creation of the March 4 Justice grassroots movement after more than 110,000 women and allies marched in 2020 across Australia to demand action.

March 4 Justice aims to transform social attitudes so every person is safe in their homes, their communities and their workplaces, give a voice to women and allies in Australia, support safe and fair workplace practices and advocate for systemic change that encourages a society to be built upon equality.

The March 4 Justice movement encourages local groups around the country to organise opportunities for supporters of #Marchwhereyouare. The purpose is to keep the issue in the public eye and to demand credible, practical measures to bring about change. This includes the implementation of the 55 recommendations of the Australian Human Rights Commission's 2020 Respect@Work report, the enactment of a federal Gender Equity Act and increased funding to raise gendered violence prevention to world's best practice.

The Reclaim the Night March will be held on Friday, 4 March 2022 with the walk weaving through the Nowra CBD to Jellybean Park. The community are invited to meet at Nowra Showground at 5.30pm for a 6pm start. Speakers and entertainment will be at Jellybean Park from 6.45pm till 8pm, with a very special performance from Tayah Larsen, a young local talented female artist. Everyone is welcome, this is an inclusive and safe space for all.

Shoalhaven City Council Mayor Amanda Findley is calling on the community to make their voice heard by participating in the Reclaim the Night March, in solidarity, to help end violence against women.

"Sadly, violence against women remains a prevalent issue in our community and has many negative impacts on those who experience violence and their family members."

"The march will unite us as a community to present a front against violence of all kinds, to advocate for those without a voice and to remember those whose voice was silenced."

"We will walk, united in peace, through the Nowra CBD to Jellybean Park." Mayor Findley said.

For more information, and to register for the March: <https://www.shoalhaven.nsw.gov.au/Council/Events-Awards/Reclaim-the-Night>

**** End ****

Issued by Communications Team
(02) 4429 3339

| media@shoalhaven.nsw.gov.au

For all media releases

visit www.shoalhaven.nsw.gov.au/



SUSSEX GREEN HOUSE - FRESH FARM PRODUCE 392 SUSSEX INLET ROAD, SUSSEX INLET



On the 25th January 2022 Kate and I had the pleasure to have called into Sussex Green House and we were amazed at the work that Toni Evans and Jesse Crowe,

the Proprietors of the Hydroponics Produce Farm, have put into their Fresh Farm Property.

What we have purchased so far, will have us returning! Check it out for yourselves... Open Wednesday - Sunday 10.00am to 6.30pm. And School Holidays 7 Days a Week.



New recycling facility to remanufacture waste plastics

9 February 2022

Shoalhaven City Council has entered a partnership with the UNSW SMaRT Centre to construct a new recycling facility called MICROFactorie.

The new facility will remanufacture approx. 14 tonnes of waste plastics into filament for 3D printing per year, and approx. 450 tonnes of glass and mattresses per year into green ceramic tiles and other forms of furnishings.

Shoalhaven City Mayor, Amanda Findley said, “Products like tiles, kitchen benches and tabletops will be available to be purchased and used in homes.”

“The project is considered groundbreaking because it solves an issue with previously unrecyclable broken and dirty glass fragments.”

“Whilst there are other glass processing facilities in Australia, this new facility uses a unique washing process. Once again, the Shoalhaven is leading the way with using innovative and cutting-edge technology to solve our growing waste problem,” Mayor Findley said.

The UNSW SMaRT Centre is a leading national research centre that works in collaboration with industry to ensure new recycling science is translated into real-world environmental and economic benefits.

Council will commence the construction of the Green ceramics MICROFactorie in early 2022 and anticipates the new facility to be completed by late 2022.



** End **

Issued by Communications Team

(02) 4429 3339 | media@shoalhaven.nsw.gov.au

For all media releases visit www.shoalhaven.nsw.gov.au/Council/Media#section-2



Australian Government
Department of Health

[Home](#) [Health topics](#) [Initiatives and programs](#) [Resources](#)

[Home](#) > [News](#) > [Health alerts](#) > [Coronavirus \(COVID-19\) health alert](#)

Coronavirus (COVID-19) current situation and case numbers

We are managing the COVID-19 outbreak in Australia as a health emergency. We will update this page every day with the current situation, latest case numbers and related information.

The above extract has been taken from the Australian Government Department of Health Website and included by the Editor Dennis Williams as a Community Service for the Department of Health.

The following web site has been provided for the community to follow the current situation on a daily basis and don't forget...

“If we all try together and don't give up, we can achieve almost anything.” AND WE WILL!

<https://www.health.gov.au/news/health-alerts/novel-coronavirus-2019-ncov-health-alert/coronavirus-covid-19-current-situation-and-case-numbers>

Shelley Hancock MP

MEMBER FOR SOUTH COAST



NSW GOVERNMENT
Shelley Hancock
Minister for Local Government

MEDIA RELEASE

**Tuesday
15th February 2022**

RAPID ANTIGEN TESTS FOR PEOPLE WITH DISABILITY

People living and working in disability funded residential settings across the South Coast will start to receive free Rapid Antigen Tests from this week to help prevent their exposure to COVID-19.

Member for South Coast, Shelley Hancock MP said the distribution of tests would assist some of the most vulnerable members of the community and their support workers.

“This is a great initiative as it will help ensure that people with disability can be supported safely at home, and reduce the risk of infections spreading as well as the potential for hospital admission,” Mrs Hancock said.

“This distribution of testing kits underpins the NSW Government’s priority of protecting the most vulnerable members of the community while the pandemic continues to pose a risk.”

The kits will be distributed to disability service providers by staff in NSW Health Local Health Districts.

Minister for Families and Communities and Minister for Disability Services Natasha Maclaren-Jones said the testing kits were a vital part of protecting people living and working in Supported Independent Living and other residential settings.

“Protecting people with disability is important because they can often be at greater risk of developing more serious illness if they become infected with COVID-19,” Mrs Maclaren-Jones said.

This initiative supplements the rollout of Rapid Antigen Tests to NDIS participants by the Commonwealth Government, which holds the primary responsibility for supporting the disability sector.

People with disability can also purchase testing kits using their NDIS plan funding or access their free allocation from community pharmacies available for those who hold Commonwealth Health Care or Concession Cards.

For more information contact the Office of Shelley Hancock MP 4421 0222



**CORONAVIRUS DISEASE 2019
(COVID-19)**

[CDC.gov/COVID-19](https://www.cdc.gov/COVID-19)

February 22, 2022

This message includes updates on the [COVID-19](#) response from CDC. The COVID-19 Outbreak is a rapidly evolving situation and information will be updated as it becomes available.

People with Certain Medical Conditions

CDC has updated the [list of certain medical conditions](#) that put people at



higher risk of getting very sick from COVID-19 to include additional disabilities, primary immunodeficiency, and physical inactivity.

CDC determines the level of risk of severe COVID-19 based on available information, such as published reports, scientific articles, and data from rigorous CDC-led investigations.

This list may not include every underlying medical condition that might increase a person's

risk for getting very sick from COVID-19. This list will be updated as CDC learns more about other medical conditions.

A person with a condition that is not listed may still be more likely to get very sick from COVID-19 and should talk with their healthcare professional about how best to manage their condition and protect themselves from COVID-19.

[Learn More](#)

Media Release

Coming soon to your community - Local Information HUB

22 February 2022

Year-round information and preparation are essential to building our community's resilience. Join Council at a community information pop-up to learn more about the digital information screens being installed across the Shoalhaven.

Shoalhaven City Council Mayor Amanda Findley is encouraging residents to find a date and location near their home this March.

"Council is installing digital information screens at local Information Hubs across the Shoalhaven, and they will be out and about in towns and villages," Mayor Findley said.

"These community information pop-ups are a wonderful opportunity to learn more about the new infrastructure and how you can get involved in preparing your community.

"This state-of-the-art technology will provide uninterrupted power and communications will give our communities confidence to access, think, decide and act to stay safe in the event of an emergency," said Mayor Findley.

For more information on dates and locations visit: <https://www.shoalhaven.nsw.gov.au/Council/Events-Awards/Recovery-Into-Resilience-Community-Information-Pop-Ups>

Media kit: <https://drive.google.com/drive/folders/1INSaMPEeEY4MLK-XtbhQ2IwEXWUIcztC?usp=sharing>



Photo (L to R): James Morris, Chairperson of the Callala Community Centre Management Committee, Mayor Amanda Findley, Vince DiPietro, Recovery into Resilience Lead and Howard Duncan, Treasurer of the Callala Community Centre Management Committee.

** End **

Issued by Communications Team
(02) 4429 3339 | media@shoalhaven.nsw.gov.au



From the Office of the Hon Shelley Hancock MP
Ph: (02) 4421 0222

Member for South Coast - Minister for
Local Government.

Mail To: southcoast@parliament.nsw.gov.au

GET IN
TOUCH
NOW

MILTON SHOW GETS BOOST

Member for South Coast, Shelley Hancock MP said Milton Show will get a well-deserved boost from the NSW Government's Country Shows Support Package grants.

"I'm delighted the Milton Show Society will received \$44,029 to support the delivery of the Milton Show"

"Country Shows are a fantastic local tradition and this funding will ensure Milton Show continues to delight locals and be a part of our history for many generations to come," Mrs Hancock said.

"It's been a tough few years for country shows, with drought, bushfires, storms, floods and COVID-19 disrupting plans, but as they say, the show must go on and these grants are helping make that happen.

"Country shows are the heartbeat of so many rural communities – they not only celebrate the best of the best in the community but allow visitors to experience the tastes, sights and sounds of the bush", Mrs Hancock said.

The Country Shows Support Package grants provide certainty to show organisers across NSW that they can lock in suppliers, hire equipment and purchase goods, which is also great news for local businesses.

It's also a big win for competitors who have spent years perfecting events like wood-chopping, show jumping or baking, as they can now focus on earning the points needed to compete at the Sydney Royal Easter Show.



Funding of up to \$15,000 is available to small shows with an audience of less than 2,000 people across all event days, while medium and large shows can apply for up to \$30,000 and \$45,000 respectively. The \$5 million Country Shows Support Package is part of the NSW Government's \$200 million Regional Recovery Package, which will deliver long term support and certainty for the regions as the state reopens. Applications are open until funding is exhausted.

For further information, including program guidelines and eligibility criteria, go to: www.nsw.gov.au/

[CountryShows.](http://www.nsw.gov.au/)

For more information contact the Office of Shelley Hancock MP 4421 0222

www.shelleyhancockmp.com.au



John Gabriele 26 Feb 2022, 3:30 a.m



Go 'troppo' and add colour to your garden

Tropical landscapes are quite easy to create even in a temperate climate and you don't have to play by the rules to achieve effective results.

The key to designing an exciting tropical landscape is through effective plant selection, which can be achieved without having to rely totally on tropical plants.

Go big and go bold by selecting plants with large vibrant leaves, bright flowers, and differences in foliage colour.

Plants with broad or strap like leaves, variegated foliage, coloured foliage, palm-like appearance and ferns can all add to the element of a tropical effect.

Large foliage plants create optical scale that feels tropical.

[READ MORE](#)



Sorry not enough for Sterling First victims

As one of more than 100 victims of the Sterling First Group housing disaster that left many seniors homeless and broke, Alan Fardoe has welcomed the results of a Senate inquiry into the 2019 collapse of the property group.

However, the spokesman for the Sterling First Action group, made up of affected seniors and family members, said the question of compensation for victims is still to be resolved.

"Although we are getting sympathy from every quarter, we are not yet getting any action to remedy it," he said.

The Sterling Group scheme was marketed to retirees as an alternative to downsizing that would result in freeing-up cash to give them a more comfortable lifestyle and a long-term secure residential base.

[READ MORE](#)

The Sanctuary Point Men's Shed Inc.



President:

Ray Marcusson 4447 8634

Secretary:

John Kelly 0413 837 538

Hours of Business 9.00am. - 3.00pm.

Monday, Wednesday & Thursday...

**Phone the office on (02) 44438239 on
these days, or call at the big green
shed located at**

**17 Clifton Street, Sanctuary Point
NSW 2540 and Say Hello Mate!**

Web Site at:

<https://www.sanctuarypointmenshed.org/>



THE COUNTRY CLUB
St Georges Basin

**Meetings are on the 2nd Thursday
of every month in the upstairs
function room from 10am-12pm.**

**Everyone is welcome to join us for
morning tea & a chat.**

**If you require more
information, please contact**

Di on 4443 3275

Or contact us on our Web Site

<https://bayandbasincancersupportgroup.org.au/>

**MAJOR CORPORATE EXPERIENCE
FOR YOUR BUSINESS OR HOME COMPUTER**

CMS
COMPUTERS MADE SIMPLE

www.computersmadesimple.com.au



LOCALLY Owned &
Operated

4443 7732



Michael King

*Bachelor of Mathematics
With Computer Science*

Senior System Analyst

02 4443 7732

Computers Made Simple Pty Ltd

mking@computersmadesimple.com.au

BAY AND BASIN TREE SERVICE

- Tree removal
- Tree trimming
- Block clearing
- Chipping service
- Hedge trimming
- Stump grinding
- Mulch supply
- Firewood

**Free Quotes
Competitive rates
Fully insured**

**Qualified Arborist - Cert III
17 years experience**

0414801730

Email: bayandbasintreeservice@gmail.com

**Wayne
Beehag**





Viva Italia!

Starring Jane Rutter



Tue 12 Apr | 11am

A gifted trifecta of musicians unite in this feel-good concert featuring some of the most beautiful Italian music ever written.

Join virtuosic instrumentalist's flautist Jane Rutter, guitarist Giuseppe Zangari and Marcello Maio on accordion/piano as they celebrate the music of Italy.

This exciting trio has played to sold-out audiences. Be whisked away on an Italian escape with this highly entertaining performance of superb music!

Complimentary morning tea served from 10am.

[READ MORE](#)

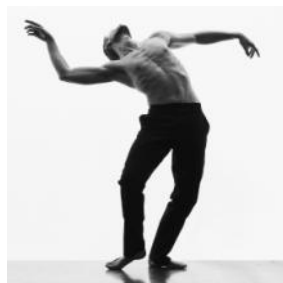
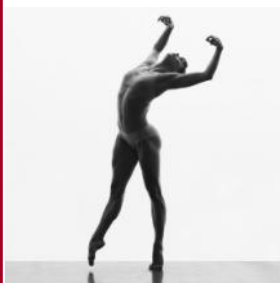


Lloyd Webber and Friends

**Morning Matinee
Wed 11 May**

Ian Stenlake & Michelle Fitzmaurice
explore the works of a true maestro.

[READ MORE](#)



THREE

DANCE • 17 - 18 Jun

A mesmerising triple bill that has critics raving



[READ MORE](#)



Jane Eyre

THEATRE • 7 - 8 May

Bold adaptation of iconic gothic tale

[READ MORE](#)

New BOCSAR publication: NSW Custody Statistics, quarterly update, December 2021

Date: Tuesday 8 February 2022 **Link to report summary -** [NSW Custody Statistics: Quarterly update December 2021](#)

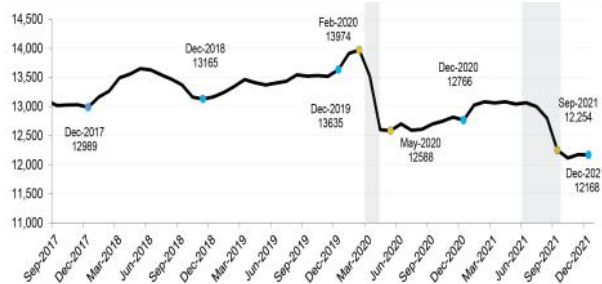
Adult Prison Population

The adult prison population remained stable in the three months from September 2021 to December 2021.

Over the medium term, however, the prison population fell considerably in-line with COVID 19 mitigation strategies. In the two years from December 2019 to December 2021 the adult prison population **fell 11%** (1,467 fewer people).

At 12,168 people in December 2021, the adult prison population was at its lowest level since the end of 2015.

From December 2019 to December 2021:



- the number of **Aboriginal adults** in prison **fell 6%** (from 3,551 people in Dec 2019 to 3,346 in Dec 2021). In December 2021, 27% of adults in prison were Aboriginal.

the number of **adult women** in prison **fell 20%** (from 981 women in Dec 2019 to 780 women in Dec 2021). In December 2021, 6% of adults in prison were women.

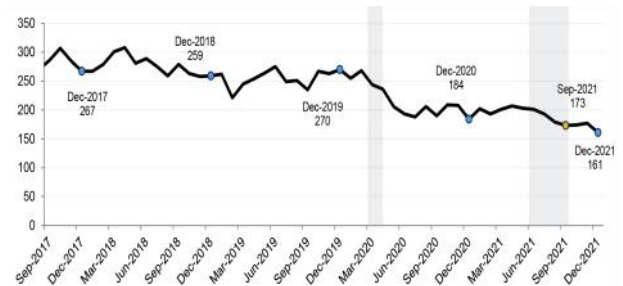
Youth Detention Population

The youth detention population reached a new historic low at the end of December 2021, falling to 161 young people. This was 12 fewer young people in detention since September 2021.

In the two years from December 2019 to December 2021 the number of young people in custody fell 40% (109 fewer young people in detention).

From December 2019 to December 2021:

- The number of **Aboriginal young people** in custody **fell 43%** (down 52 detainees from 121 in Dec 2019 to 69 in Dec 2021). In December



2021, 43% of young people in custody were Aboriginal.

The number of **young females** in custody **fell 54%** (down 13 detainees from 24 females in Dec 2019 to 11 in Dec 2021). In December 2021, 7% of young people in custody were female.

Email: bcsr@justice.nsw.gov.au

Copies of the report www.bocsar.nsw.gov.au

Log on to the NSW Police Web Site for the “Tell us what you want SURVEY!”.

SURVEY LOG ON

<https://secure.peoplepulse.com.au/display.php?mid=2060116b2b887848336>

If you think

something is Wrong... Help them to help us! Contact your Local Police Station... Or Phone it in when you know it is wrong!

**Shoalhaven Local Area Command
Police Telephone Contact List
In the case of an Emergency Phone : 000**

Position	Location	Phone Number
Bay & Basin Police Station	Sanctuary Point	Phone: 02 44421899
Bay & Basin Police Station	Sanctuary Point	Fax: 02 44421811
Crime Prevention Officer	Nowra Police Station	02 44219619
Nowra Police Station	Nowra - Main switch	02 44219699
Sussex Inlet Police Station	Sussex Inlet	02 44468880
Police Assistance Line	PAL	13 14 44
Police Assistance Line TTY Hearing / speech impaired only	PAL	02 92113776
Crime Stoppers	Crime Stoppers	1800333000

NSW POLICE FORCE website address www.police.nsw.gov.au

SHOALHAVEN LAC FACEBOOK PAGE
 <https://www.facebook.com/ShoalhavenLac>

Where no emergency exists and immediate investigation by a Police officer is not necessary, registered community members can now create online reports such as Lost Property, Intentional Damage or Graffiti and Theft, in their own time anywhere where an internet connection is present, using devices of today’s technology.

NSW Police Community PORTAL — Check it out for yourself

http://www.police.nsw.gov.au/community_portal/about-the-portal

for the SAFETY OF LIFE AT SEA

When you are going on the waters, of the St. Georges Basin... Don't forget to log on and off with Marine Rescue Sussex Inlet, for the safety of your life on the water. (27 MHz Chn: 88 VHF Chn: 16) Or Telephone: 4441 3555.



The above Notice is inserted by the Editor as a Community Service for **SUSSEX INLET**



POLICE ASSISTANCE LINE... 131 444 For reporting of non urgent matters, It will be recorded as an Incident and passed on to the appropriate Police Station to follow up ... It will also become a Statistic and they can be used for the allocation of Police in your local area.

EMERGENCY ... 000 and ask for Police. For Life Threatening or Immediate Attention Required.

CRIME STOPPERS ... 1800 333 000 Anonymous Information.

When you have had enough!...Remember... If you really want to stop Crime... Commit yourself to a SIGNED STATEMENT and you will REALLY give your POLICE something to WORK WITH!

Inserted by the Editor as a Community Service for **Shoalhaven LAC**