



Photo of Palm Beach Sanctuary Point NSW on a clear day... Photo taken by the Editor Dennis Williams.

***SANCTUARY POINT A CONCERNED CITIZENS
NEWSLETTER September 2020 Vol. 116*** and website at
<https://sanctuarypointaconcernedcitizensnewsletter.com>

Shoalhaven, South Coast NSW Events Calendar can be located on the following Link...

<https://www.shoalhaven.com./events/?A=1+September+2020&A=30+September+2020&C=&L=&Y=#read>



**When
it's Spring
time in
Australia**



**It's a time
I love the
most!**



Written and Printed as a community service, by the Editor... Dennis Williams
3 Ridgeland Drive, Sanctuary Point 2540 Telephone: (02) 4443 3394

Have Your Say!**SUSTAINABLE TOURISM
INFRASTRUCTURE PROJECTS**

Shoalhaven City Council is asking for your input into the proposed plans for the following six sustainable tourism projects designed to improve infrastructure around some of the City's most popular tourist destinations.

The \$5.3 Million Restart NSW Infrastructure Grant, together with \$1.63 Million Council funding and an \$80,000 sculpture in-kind contribution from the Ulladulla Local Aboriginal Land Council will see these projects undertaken within the next three years:

Plantation Point – For further details visit the [Upgrades at Plantation Point Reserve, Vincentia](#) Get Involved web page.

Palm Beach/Sanctuary Point – Refer to the [Palm Beach Concept Plan D2 \(External link\)](#) published in the Document Library on this Get Involved web page.

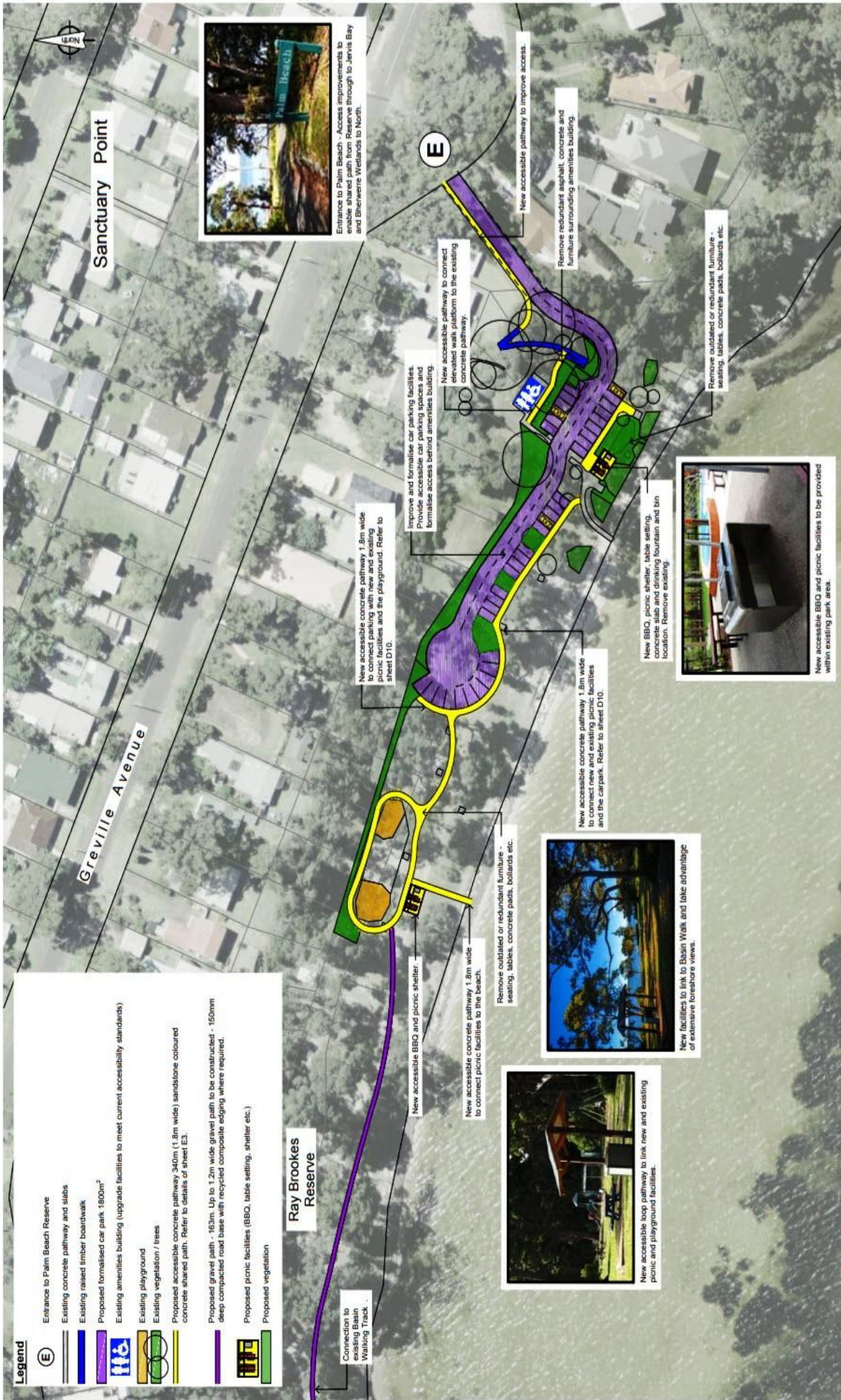
St Georges Basin/Sanctuary Point – Basin Walk – Refer to the [Basin Walk Concept Plan D3\(External link\)](#) published in the Document Library on this Get Involved web page.

Sanctuary Point/Bherwerre Wetland – Refer to the [Bherwerre Wetland Concept Plan D4\(External link\)](#) published in the Document Library on this Get Involved web page.

Ulladulla Headland and Warden Head Walking Trails – Refer to the [Ulladulla – Warden Head and North Head Walking Trails Concept Plans D6, D6-1, D6-2\(External link\)](#) published in the Document Library on this Get Involved web page.

Murramarang Coastal Walk Extension – Refer to the [Murramarang Coastal Walk Extension Plan D7, D7-1, D7-2, D7-3, D7-4, D7-5, D7-6 \(External link\)](#) published in the Document Library on this Get Involved web page.

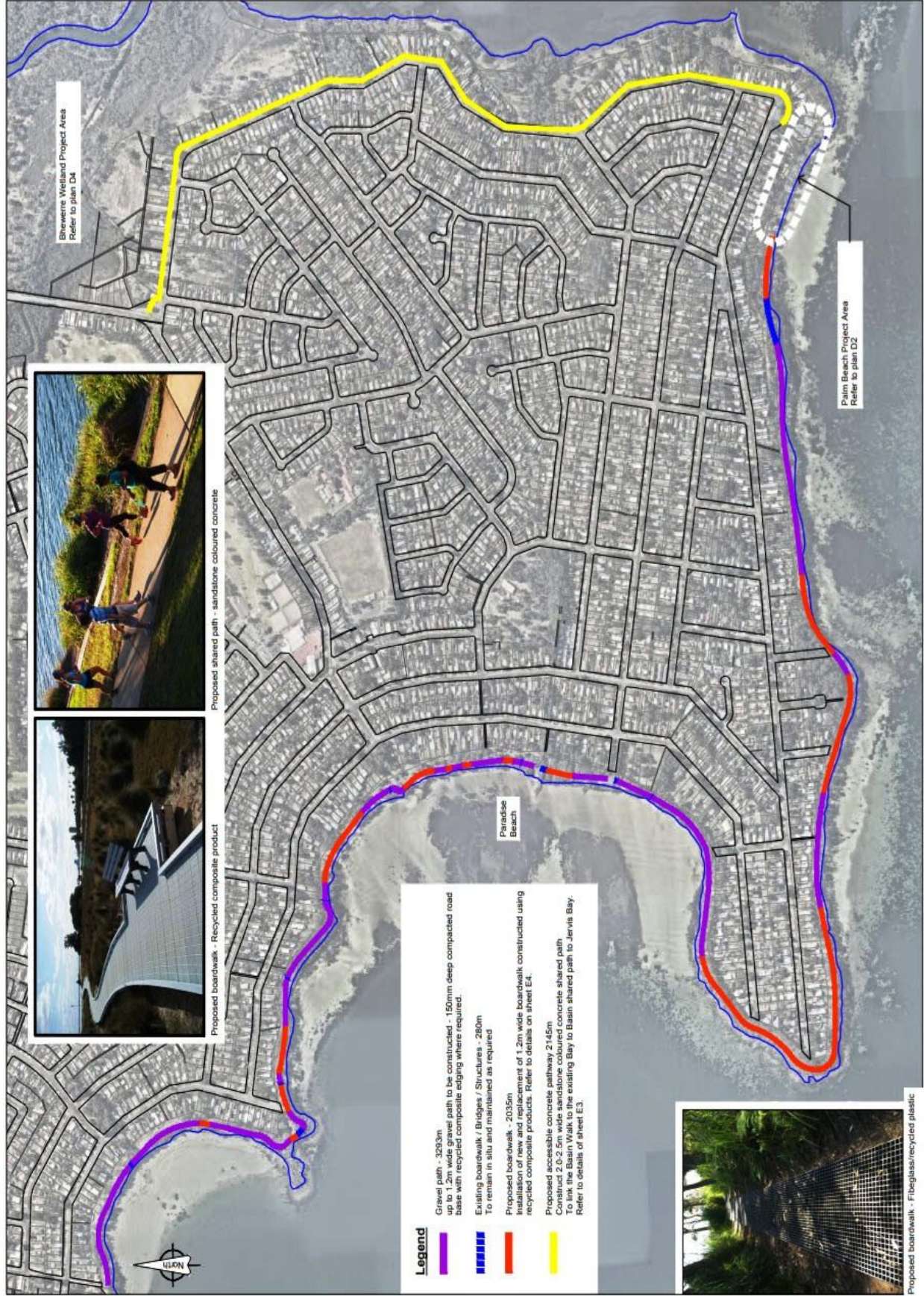
Please provide your input by completing the [online survey](#) on this Get Involved web page **by midnight on Sunday 13 September 2020.**



Legend

- (E) Entrance to Palm Beach Reserve
- Existing concrete pathway and slabs
- Existing raised timber boardwalk
- Proposed formalised car park, 1800m²
- Existing amenities building (upgrade facilities to meet current accessibility standards)
- Existing playground
- Existing vegetation / trees
- Proposed accessible concrete pathway 340m (1.8m wide) sandstone coloured concrete shared path. Refer to details of sheet E3.
- Proposed gravel path - 163m. Up to 1.2m wide gravel path to be constructed - 150mm deep compacted road base with recycled composite edging where required.
- Proposed picnic facilities (BBO, table setting, shelter etc.)
- Proposed vegetation







- Legend**
- Bridge Supplied by Shoalhaven City Council
 - Proposed New Bridge
 - Proposed Gravel Path - 1341m
 - Proposed Accessible Raised Boardwalk - 373m
 - Proposed Standard Raised Boardwalk - 660m
 - Entrance
 - Proposed Carpark/turning circle
 - Proposed Track Head Sign
 - Proposed Art Installation Post
 - Proposed Interpretation Station
 - Seat
 - Toilet Sign
 - Toilets
 - Bird Hide
 - Sculptural Fence - 271m
 - Boundary Fence - 1719m



New accessible raised boardwalk. Placement located to avoid trees. Refer to EA.



Sanctuary Point - Bherwerre Wetland Project Plan

From the Office of the Hon Shelley Hancock MP

Ph: (02)4421 0222



Member for South Coast - Minister for Local Government.

Mail To: southcoast@parliament.nsw.gov.au

GET
IN
TOUCH
NOW

Tuesday, 25 August 2020

MENTAL HEALTH SUPPORT

People in the South Coast electorate are being reminded that there are a number of free, confidential and easy to access mental health supports available in person, on the phone and online around the clock.

Member for South Coast Shelley Hancock said that mental health programs and services are available both for young people and the wider community and encouraged anyone needing assistance to reach out now.

“It’s great that mental health is in such focus right now, we need to talk about it, but we need to talk about it in the right way,” said Mrs Hancock.

“Every teenager should know the dangers of drinking and driving, every teenager is taught ‘speeding kills’, well every teenager should know where and how they can access free mental health services”.

Minister for Mental Health Bronnie Taylor said that there were services and programs with a focus on vulnerable populations such as young people which she encouraged those in the community to access whenever they need support.

“Mental health support is available. We do not want our young people or anyone else to think they won’t get the help they need if they ask for it.”

“There are specialist counsellors in schools and resources available for teachers and families. There are specialist community youth services and Headspace. No young person has to feel like they have nowhere to turn when they are really struggling.”

The NSW Government has invested \$80m in mental health programs in response to the COVID-19 Pandemic. This is in addition to increased mental health and crisis support services for children, young people and adults in NSW, through \$34.6 million over four years to Beyond Blue, Black Dog Institute, Lifeline and Kids Helpline.

If you, or someone you know, is thinking about suicide or experiencing a personal crisis or distress, please seek help immediately by calling 000 or one of these services:

Lifeline 13 11 14

Kids Helpline 1800 55 1800

Suicide Call Back Service 1300 659 467

NSW Mental Health Line 1800 011 511



Geraldine Cardozo 29 Aug 2020,



Louis Armstrong's What a Wonderful World gets first official video.

THE clip comes 52 years after the jazz great released his smash hit ballad What a Wonderful World.

[READ MORE](#)



DIGNity Supported Community Gardening shares dementia-friendly tips

THEY'RE A NICE BUNCH: Participants June (left) and Betty with DIGNity mental health counsellor Michael at a DIGNity session at Oakines Community Garden in Dodges Ferry, Tasmania. IT'S NOT just delicious vegies and colourful plants cropping up at one Tasmanian community gardening project.

The people behind the DIGNity Supported Community Gardening initiative - a joint initiative between the University of Tasmania's Centre for Rural Health and three neighbourhood houses and gardens in the state's south east - have produced a [handy online guide for other community gardens](#) who want tips on how to make their space more dementia-friendly.

[READ MORE](#)



Sage Swinton

29 Aug 2020
3:30 am

50,000th migrant Maira Kalnins donates toy koala to Greta Museum 71 years after arriving



A toy koala presented to the 50,000th migrant to arrive in Australia 71 years ago has made a remarkable return to Greta on the 5th anniversary of Victory in the Pacific Day.

On August 12, 1949, then Minister for Immigration, Arthur Calwell, flew to Fremantle in Western Australia, to welcome the 50,000th migrant under the displaced persons program following World War II.

Maira Kluina hands the toy koala to Cessnock Mayor Bob Pynsent for Greta Museum to display. Picture: Simone De Peak

[READ MORE](#)



Australian Government
Department of Health

[Home](#) [Health topics](#) [Initiatives and programs](#) [Resources](#)

[Home](#) > [News](#) > [Health alerts](#) > [Coronavirus \(COVID-19\) health alert](#)

Coronavirus (COVID-19) current situation and case numbers

We are managing the COVID-19 outbreak in Australia as a health emergency. We will update this page every day with the current situation, latest case numbers and related information.

The above extract has been taken from the Australian Government Department of Health Website and included by the Editor Dennis Williams as a Community Service for the Department of Health.

The following web site has been provided for the community to follow the current situation on a daily basis and don't forget **“If we all try together and don't give up, we can achieve almost anything.” AND WE WILL!**

<https://www.health.gov.au/news/health-alerts/novel-coronavirus-2019-ncov-health-alert/coronavirus-covid-19->



31 August 2020

Shoalhaven Community Wanted for Coastal and Flood Committees

Shoalhaven City Council are forming Coastal Management Program Advisory Committees, and Floodplain Risk Advisory Committees, for North, Central and Southern areas of Shoalhaven.

Applications for Expressions of Interest close 2 September. If you are interested in being involved, we urge you to apply.

Kelie Clarke, Section Manager of Environmental Services at Shoalhaven says, “The Coastal Management Program Advisory Committees will contribute to the development and implementation of coastal management plans and will meet on an as-needs basis.”

Kelie Clarke, Section Manager of Environmental Services at Shoalhaven says: “The Floodplain Risk Management Committees help Council manage flood risks across the city and assist develop Council’s Floodplain Risk Management Plans as outlined in the NSW Floodplain Development Manual guidelines.”

The Committees provide a forum to contribute ideas, professional expertise, experience, and local knowledge to assist Council in formulating and implementing a Floodplain Risk Management Plan, and Coastal Management Plans.

If you are interested in getting involved, visit Shoalhaven City Council’s [Get Involved page](#),

or alternatively email Leslie.Reid@shoalhaven.nsw.gov.au for more information.

**** End ****

Issued by Communications Team

(02) 4429 3339 | media@shoalhaven.nsw.gov.au

For all media releases visit

www.shoalhaven.nsw.gov.au/My-Council/Media-releases

**Sanctuary Point
A Concerned Citizens Newsletter**



**If we try together and
don't give up, we can
achieve almost anything!**

Web Site
sanctuarypointaconcernedcitizensnewsletter.com



EDITOR: Dennis Williams

City Maintenance

Help us to Help you!

Maintenance & Graffiti Reporting Line
Phone: (02) 44293111

24 hours/day, 7 days/week, and
an automated system will record your concern.



The Sanctuary Point Men's Shed Inc.

President : Ray Marcusson 4447 8634

Secretary: John Kelly 0413 837 538

Web Site at:

<https://www.sanctuarypointmenshed.org/>

Hours of Business

**8.30am. - 4.30 pm. Monday to Friday... Phone the office on (02) 44438239
on these days, or call at the big green shed located at 17 Clifton Street,
Sanctuary Point NSW 2540 and Say
Hello Mate!**

**MAJOR CORPORATE EXPERIENCE
FOR YOUR BUSINESS OR HOME COMPUTER**



www.computersmadesimple.com.au



LOCALLY Owned & Operated

4443 7732



Michael King

*Bachelor of Mathematics
With Computer Science*

Senior System Analyst

02 4443 7732

Computers Made Simple Pty Ltd

mking@computersmadesimple.com.au

**BAY AND BASIN
TREE SERVICE**

- Tree removal
- Tree trimming
- Block clearing
- Chipping service
- Hedge trimming
- Stump grinding
- Mulch supply
- Firewood

**Free Quotes
Competitive rates
Fully insured
Qualified Arborist - Cert III
17 years experience**

0414801730

Email: bayandbasintreeservice@gmail.com

**Wayne
Beehag**



I SING TO THE LOVE ONES WHERE EVER THEY ARE
KEEP CLOSE TOGETHER AND NEVER STRAY FAR
KEEP THEM ALL SAFE AND AWAY FROM ALL HARM
KEEP THEM TOGETHER WITH EACH OTHERS CHARM

I SING TO THE LOVE ONES WHO EVER THEY BE
LET THEM GROW UP IN A WORLD THAT IS FREE
LET EACH ONE KNOW THAT YOU ARE IN LOVE
AND GIVE OUT YOUR THANKS TO THE POWER
ABOVE.

I SING TO THE LOVE ONES THAT WILL BE TRUE
IF YOU ARE FAITHFULL I SING UNTO YOU
HOLD HIGH YOUR HEADS FOR YOU NOW CAN BE
PROUD
YOU HAVE FOUND ONE ANOTHER YOUR OUT OF THE
CROWD

I SING TO THE LOVE ONES I SING UNTO YOU
ALWAYS BE FAITHFULL AND ALWAYS BE TRUE
FOR IF YOU ARE CHEATING YOU WILL BE CAUGHT
YOU MAY THEN BE PARTED AND THEN YOU'LL BE
TAUGHT

I SING TO THE LOVE ONES WHERE EVER THEY ARE
STAY CLOSE TOGETHER AND NEVER STRAY FAR
KEEP THEM TOGETHER IS WHAT I DO SAY
KEEP THEM IN LOVE FOR EACH SINGLE DAY

I SING TO THE LOVE ONES WHO PASS ME NOW
I TAKE OFF MY HAT AND I GIVE THEM A BOW
THEY ARE THE ONES THAT THE WORLD SHOULD
SEE
THEY ARE THE ONES THAT CAN KEEP IT FREE

I SING TO THE LOVE ONES WALKING ARM IN
ARM
WALKING TOGETHER WITH EACH OTHERS
CHARM
LET THEM BE HAPPY FOR EVER MORE
LET THEM BE HAPPY THIS I DO WISH FOR.

Dennis O Williams

In Your Neighbourhood

27th August 2020



Our Pledge Towards a Sustainable Future

Council has made five new pledges as part of its Cities Powers Partnership (CPP) to employ sustainable energy solutions for the future.

The CPP is Australia's largest network of towns and cities tackling climate change head on. Since becoming part of the CPP in 2017, Council has found new ways to innovate and reduce energy expenditure and emissions.

Recent initiatives include installation of ground-mounted and rooftop solar power systems at a number of Council assets, as well as an energy efficient LED lighting upgrade at Nowra Library under Council's Revolving Energy Fund. [LEARN MORE](#)



Shoalhaven Showground Renewal

Council will deliver a number of improvements to four showgrounds after successfully obtaining a NSW Government Showground Stimulus Package.

Round 1 improvements include an accessible pathway, amenities and laundry at Milton Showground camping and recreational facility; improvements to lighting, air conditioning, carpet and fencing at Nowra Showground; improvements to the visual amenity, air conditioning and fencing at Berry Showground and air conditioning and main arena fencing at Kangaroo Valley Showground.

Additional improvement projects have been submitted for Round 2 funding.

[CONTINUE](#)



Development and Subdivision Changes

Council has recently completed a 4 year process to change the way we undertake medium density development (and its subdivision) in Shoalhaven.

The changes involve the need to meet a certain land size prior to undertaking medium density development, the removal of Torrens restrictions for certain medium density development and has resulted in the rezoning of over 700 low density residential lots to a large lot residential zoning. [MORE INFO](#)

31 August 2020

Shoalhaven Council Officer Wins Women in Local Government Award

Shoalhaven City Council's Local Emergency Management Officer (LEMO), Kim White, has been named Winner of the Alternative Pathways Award in the 2020 Ministers' Awards for Women in Local Government.

The Alternative Pathways Award recognises a female staff member who is breaking down gender stereotypes and making an important contribution to their local council and community's overall success.

Shoalhaven City Council's Mayor Amanda Findley said, "In a traditionally male-dominated role, Kim has delivered reliable and sound management of local emergency planning, preparation and response to Shoalhaven emergency situations since 2010. With a 28-year career in local government, Kim is a valued member of the team at Shoalhaven City Council."

"Kim is known throughout the organisation for her big heart and outstanding work ethic and is highly regarded by local emergency agencies for her dedication to her position," she said. "Kim has helped the Shoalhaven lead the way in best practice emergency management, shaping Shoalhaven emergency planning and response. Her role as LEMO is essential in Shoalhaven City's preparedness for and response to an emergency," said Cllr Findley.

"This has never been more apparent than during the recent 74-day fire event experienced in NSW that began on 26 November 2019. The Currowan fire claimed three lives, damaged houses and infrastructure and burnt through over 80% of the Shoalhaven, totalling some 4567 square kilometres," she said.

"As LEMO, Kim worked quickly to stand up the Local Emergency Operations Centre (EOC) and played an instrumental role in setting up the EMPLAN and the format of the Centre which is widely known in the industry as best practice in local emergency management. It is a credit to Kim, the Rural Fire Service and the emergency agencies involved that there wasn't further loss of life and damage to townships and villages," said Cllr Findley.

"Kim worked in the EOC throughout the emergency period, supporting the Local Emergency Operations Controller (LEOCON) in their duties, providing assistance to emergency agencies and keeping up to date with the latest developments as they happened. Kim was working through this disaster as her own house was under direct threat of the fire," she said.

"After 74 days, the EOC was shut down with the immediate threat of bushfire over. The closure only lasted a few days with the Centre reopening due to a major rain event, with parts of the Shoalhaven being inundated with rain and causing flooding of low-lying areas. Kim moved swiftly again, assisting the SES to get agencies and processes in place to assist in the coordination of the local government response to the weather event, again whilst personally facing direct threat of floods," said Cllr Findley.

As well as the recent Currowan Fire (2019/2020), Kim's experience and expertise has assisted Shoalhaven residents throughout the Kingiman Fire (2018), Deans Gap Fire (2013) and the Shoalhaven Floods (2015).

Kim's award is just one of six awards that acknowledge the contributions of inspirational women in NSW councils whose dedication and commitment contribute so much to their local council and community's overall success.

Photo caption: Award winning Council Officer Kim White (far right) is congratulated by Rural Fire Service Superintendant Mark Williams, Shoalhaven City Council Mayor Amanda Findley and NSW Police Inspector Ray Stynes.





More NSW offenders supervised in the community

Release date: 10.30am Thursday, 27 August 2020

[Link to report summary](#)

[NSW sentencing reforms: results from a survey of judicial officers](#)

[The impact of the 2018 NSW sentencing reforms on supervised community orders and short-term prison](#)

The 2018 sentencing reforms increased supervised community sentences and reduced both short-term prison sentences and unsupervised community sentences according to a report released today by the NSW Bureau of Crime Statistics and Research (BOCSAR).

In September 2018 the NSW Government introduced reforms that made community sentencing options more flexible in order to maximise opportunities for offenders to be supervised and to engage in rehabilitative and therapeutic programs.

Two aims of the reforms were to:

Increase the proportion of offenders sentenced to supervised community-based orders;
Reduce the proportion of offenders serving short prison sentences; BOCSAR found the reforms achieved both these objectives. The proportion of adult offenders in the Local Court who received a supervised community order increased significantly from 14.6% to 22.0% after the sentencing reforms commenced. The percentage of offenders who received a short-term prison sentence of 12 months or less significantly declined from 5.2% to 4.4%. Similar results were found for Domestic Violence offenders and Aboriginal offenders in the Local Court and adult offenders in the District and Supreme Courts.

A second study undertaken by BOCSAR in partnership with the Judicial Commission of NSW assessed judicial confidence in the new sentencing reforms through a survey of 93 magistrates and judges. Judicial officers generally agree that the reforms are operating as intended. 71% believe offenders have more opportunity to serve a supervised community-based order, 57% agree that new community-based options provide more flexibility in sentencing decisions and 47% agree that offenders have more opportunity to participate in rehabilitation programs.

However, a number of concerns were raised by judicial officers. Some were concerned about the Corrective Services practice of suspending supervision for low risk offenders regardless of the sentencing conditions stipulated by the judicial officer. Another concern was the lack of transparency regarding breaches of Intensive Corrections Orders (a community based alternative to full-time custody) which are overseen by the State Parole Authority.

Commenting on the findings, BOCSAR Executive Director, Jackie Fitzgerald said it is clear that the sentencing reforms have had the desired impact of increasing the opportunities for offenders to receive the potentially therapeutic benefits of supervision. "The ultimate goal of the reform, however, is to reduce reoffending. We won't have an answer as to whether the reforms have achieved this aim until 2021."

Further enquiries: Jackie Fitzgerald, Executive Director 0423 139 687

Email: bcsr@justice.nsw.gov.au

Copies of the report: www.bocsar.nsw.gov.au



**With
Senior Constable Anthony Jory
Stealing from Vessels:**

Records indicate that stealing's from vessels have been occurring for over 110 years. Bram STOKER wrote about them in his Novel which indicates that the phenomenon was started by Count Dracula in Transylvania and then went to England many years later. However, it's not the vessels that Dracula targeted that I am writing about. It's the vessel/s that adorns the front yards of many places around the Shoalhaven.

While I go for my daily 20 km run (This may or may not be true) I look around and see many Tinnies on trailers in front yards, standing like silent Sentinels guarding the driveway. In reality, they are guarding nothing, not even the property that has been left within the vessel. Life jackets, fire extinguishers, tackle and fishing rods are just some of the items that get stolen regularly.

Not everyone has a back yard big enough to put a boat in. If you have to keep your boat in the front yard, please remove the lifejackets, tackle, rods etc from the boat and secure the items somewhere safe.

Also, it would be wise to fit one of those anti-theft devices to the tow ball of the trailer.

Remember: Do not Drink and Drive and you can Dob in a Druggie any time you like, by contacting Nowra Police or ringing Crime Stoppers. on 1800 333 000

As always, in case of emergency, call (000)

Non Emergencies contact Police Assistance Line on 131444 or your local Police. To provide anonymous information call crime stoppers on 1800 333 000.

Shoalhaven Domestic Violence Officers Email shoaladvlo@police.nsw.gov.au

Don't forget. Cops are Tops.

**Information provided by On The Beat & Inserted by the Editor as a Community Service for
Shoalhaven LAC**

Log on to the NSW Police Web Site for the “Tell us what you want SURVEY!”.

SURVEY LOG ON

<https://secure.peoplepulse.com.au/display.php?mid=2060116b2b887848336>

If you think

something is Wrong... Help them to help us! Contact your Local Police Station... Or Phone it in when you know it is wrong!

**Shoalhaven Local Area Command
Police Telephone Contact List
In the case of an Emergency Phone : 000**

Position	Location	Phone Number
Bay & Basin Police Station	Sanctuary Point	Phone: 02 44421899
Bay & Basin Police Station	Sanctuary Point	Fax: 02 44421811
Crime Prevention Officer	Nowra Police Station	02 44219619
Nowra Police Station	Nowra - Main switch	02 44219619
Sussex Inlet Police Station	Sussex Inlet	02 44219619
Police Assistance Line	PAL	131444
Police Assistance Line (PAL) Hearing / speech impaired only	PAL TTY	02 92113776
Crime Stoppers	Crime Stoppers	1800333000

NSW POLICE FORCE website address www.police.nsw.gov.au

SHOALHAVEN LAC FACEBOOK PAGE
<https://www.facebook.com/ShoalhavenLac>

Where no emergency exists and immediate investigation by a Police officer is not necessary, registered community members can now create online reports such as Lost Property, Intentional Damage or Graffiti and Theft, in their own time anywhere where an internet connection is present, using devices of today's technology.

NSW Police Community PORTAL — Check it out for yourself

http://www.police.nsw.gov.au/community_portal/about-the-portal

**for the SAFETY OF
LIFE AT SEA**

**When you are going
on the waters, of the
St. Georges Basin...
Don't forget to log on
and off with
Marine Rescue
Sussex Inlet, for the
safety of your life on
the water. (27 MHz
Chn: 88 VHF Chn: 16)
Or Telephone:
4441 3555.**



The above Notice is inserted
by the Editor as a
Community Service
for
SUSSEX INLET



POLICE ASSISTANCE LINE... 131 444 For reporting of non urgent matters, It will be recorded as an Incident and passed on to the appropriate Police Station to follow up ... It will also become a Statistic and they can be used for the allocation of Police in your local area.

EMERGENCY ... 000 and ask for Police. For Life Threatening or Immediate Attention Required.

CRIME STOPPERS ... 1800 333 000 Anonymous Information.

When you have had enough!...Remember... If you really want to stop Crime... Commit yourself to a SIGNED STATEMENT and you will REALLY give your POLICE something to WORK WITH!

Inserted by the Editor as a Community Service for **Shoalhaven LAC**