



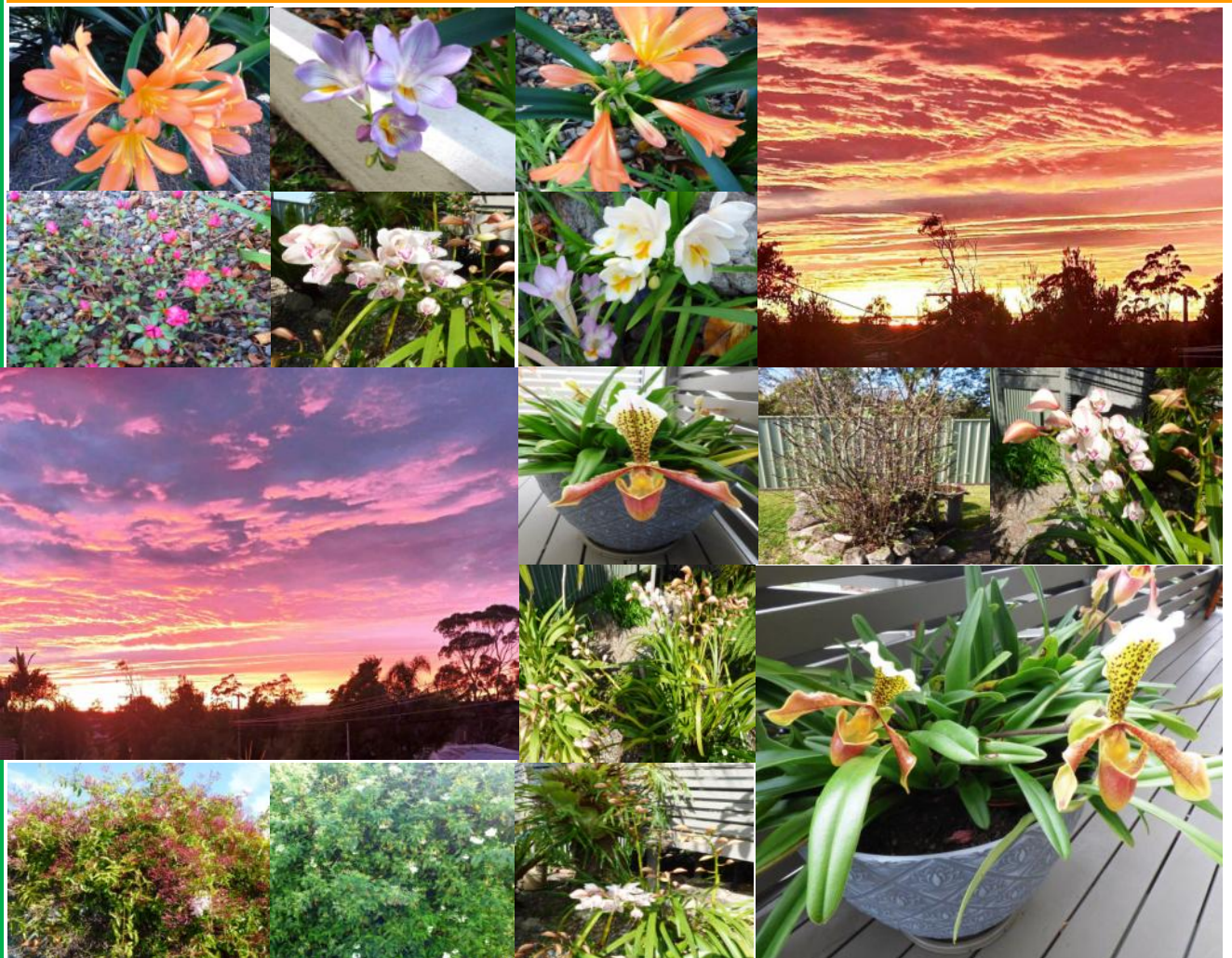
Photo of Palm Beach Sanctuary Point NSW... Photo taken by the Editor Dennis Williams 27th Mar 2021.

***SANCTUARY POINT A CONCERNED CITIZENS  
NEWSLETTER Sep 2022 Vol.140*** and website at  
<https://sanctuarypointaconcernedcitizensnewsletter.com>

Shoalhaven, South Coast NSW Events Calendar can be located on the following Link...

<https://www.shoalhaven.com./events/?A=1+Sep+2022&A=30+Sep+2022&C=&L=&Y=#read>

*Spring has Sprung over Sanctuary Point... Let there be sun, for the things to be done! ... From Our Garden 1st September 2022.*



Written and Printed as a community service, by the Editor... Dennis Williams  
3 Ridgeland Drive, Sanctuary Point 2540 Telephone: (02) 4443 3394

**On the 16th July 2022 The Uni Sex and Disabled toilets attached to the Frances Ryan Sports Ground Amenities block, were vandalised and set on fire!**

**For a period of time when the toilet block was completely closed to the public, for those, who when nature called, could not obtain relief there!**

**Many of them sort relief in the Business Facilities.**

**It has now been over six weeks and the disable toilet has not been restored. The Frances Ryan Sports Ground in Sanctuary Point (population in excess of 7000) is a well used facility under the control of the Shoalhaven Council.**



**If not already installed, perhaps consideration for CCTV on those high Ground Lights, would be a deterrent for vandalism in the park??**



# SUSSEX GREEN HOUSE - FRESH FARM PRODUCE 392 SUSSEX INLET ROAD, SUSSEX INLET



On the 25th January 2022 Kate and I had the pleasure to have called into Sussex Green House and we were amazed at

the work that Toni Evans and Jesse Crowe, the Proprietors of the Hydroponics Produce Farm, have put into their Fresh Farm Property.

What we have purchased so far, will have us returning! Check it out for yourselves... Open Wednesday - Sunday 10.00am to 6.30pm. And School Holidays 7 Days a Week.





## **NEW BUS SERVICES GO LIVE IN GREATER NOWRA**

From today, there are more options to get around Greater Nowra with more than 250 additional bus services each week rolled out under the NSW Government's 16 Regional Cities Services Improvement Program.

Parliamentary Secretary and Member for South Coast Shelley Hancock said the new timetable and bus routes were being delivered following consultation with the community.

"The introduction of new services is great news for those in the Greater Nowra community who rely on buses and have no other way of getting from A to B," Ms Hancock said.

"These new timetables and routes will also help boost the Greater Nowra economy, with more buses running in off-peak times and on weekends, helping employees such as nurses, hospitality staff and shift workers get to and from work more easily.

"These services are the result of consultation with the Greater Nowra community which told us what services they wanted."

Minister for Regional Transport and Roads Sam Farraway said the launch of the new services was a huge win for the local area.

"This is great news for the local community and we are making sure public transport is a first- choice option in regional NSW," Mr Farraway said.

"Today's 'go live' of the new timetable and bus routes is good news for our essential workers, families and visitors.

"We're making sure everyone can get where they need to go which is all part of the NSW Liberals and Nationals in Government plan to secure a brighter future for NSW families." The new bus network includes better connections with Nowra CBD, Bomaderry train station and Vincentia Home Co and Shopping Village.

Suburbs including Twin Waters Estate, Worrigea and Errowal Bay will also get improved services. Some routes will have new Saturday, Sunday and even public holiday services. 2 Greater Nowra customers can view the new timetable at <https://transportnsw.info/> and on the Trip Planner app [www.transportnsw.info/trip](http://www.transportnsw.info/trip) They can also track real-time data on bus location, predicted departure times and occupancy via Trip Planner and other transport apps.

Examples of the improvements include:

- A total of 126 additional weekly services between Basin View and St Georges Basin to Bomaderry via Sanctuary Point, Vincentia, South Nowra and Nowra
- A new, more direct service between the University of Wollongong Campus and Bomaderry Station
- A new route from Berrara and Sussex Inlet to Vincentia via Tomerong and Vincentia Home Co operating Monday to Saturday with 24 weekly services

For information about the 16 Regional Cities Services Improvement Program visit [www.transport.nsw.gov.au/projects/programs/16-regional-cities-program](http://www.transport.nsw.gov.au/projects/programs/16-regional-cities-program) or call 1800 717 528

**For more information contact the Office of Shelley Hancock MP 4421 0222**



Australian Government  
Department of Health

[Home](#)   [Health topics](#)   [Initiatives and programs](#)   [Resources](#)

[Home](#) > [News](#) > [Health alerts](#) > [Coronavirus \(COVID-19\) health alert](#)

## Coronavirus (COVID-19) current situation and case numbers

We are managing the COVID-19 outbreak in Australia as a health emergency. We will update this page every day with the current situation, latest case numbers and related information.

The above extract has been taken from the Australian Government Department of Health Website and included by the Editor Dennis Williams as a Community Service for the Department of Health.

**The following web site has been provided for the community to follow the current situation on a daily basis and don't forget...**

**“If we all try together and don't give up, we can achieve almost anything.” AND WE WILL!**

<https://www.health.gov.au/news/health-alerts/novel-coronavirus-2019-ncov-health-alert/coronavirus-covid-19-current-situation-and-case-numbers>

## Kangaroo Valley Road was severely impacted by the March East Coast Low and subsequent rain events.

- **Public access**

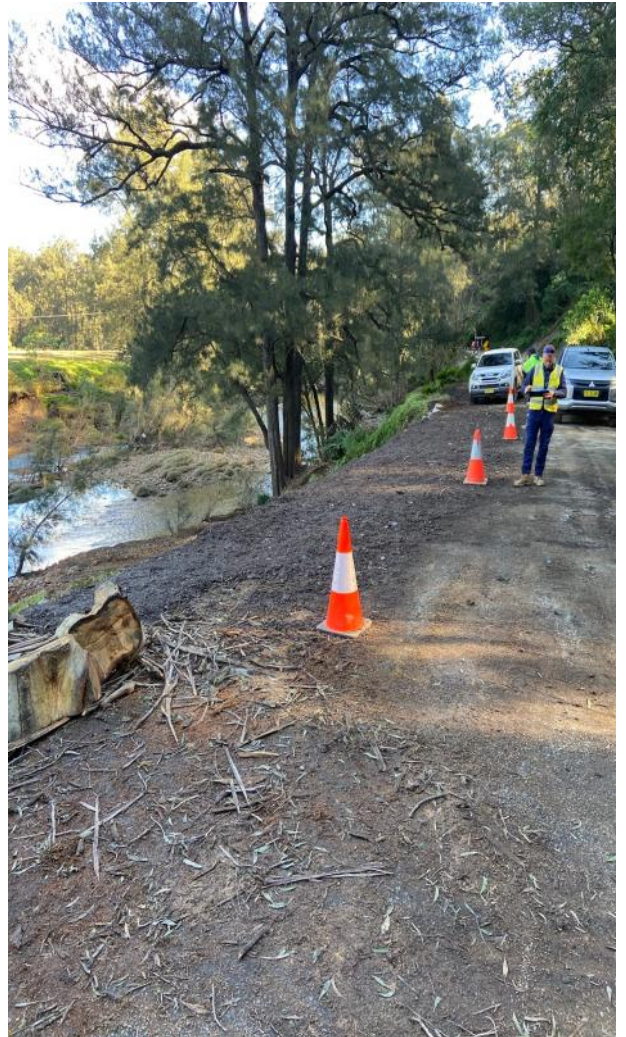
OPEN

Reduced speed

Where [Kangaroo Valley Road, Kangaroo Valley 2577](#)

Last updated 24 August 2022

**Latest update** Geotechnical investigations for Kangaroo Valley Road are currently re investigated due to the change in landslip structure that developed from the recent weather event this month. The investigation will include the scope to identify additional



### [See the latest updates](#)





September 3 2022 - 5:30am

Bruce McAvaney prepares to host the Leukaemia Foundation's annual Light the Night event in Blood Cancer Month 2022... Picture supplied

## Game on for veteran sports presenter Bruce McAvaney in fight against leukaemia

One of the best-known names in sport off the field, veteran Australian sports broadcaster [Bruce McAvaney](#), is about to light up the night skies for a cause in his blood.

Bruce, 69, will front an event close to his heart as he prepares to host the Leukaemia Foundation's annual Light the Night event in Blood Cancer Month, starting on September 30.

Many don't realise Bruce was diagnosed with chronic lymphocytic leukaemia (CLL) in 2014 and is devoted to the blood cancer community.

For 15 years, thousands of Australians impacted by blood cancer, from every corner of the country, have come together for Light the Night to light up the night skies from their backyards, lounge rooms and hospital wards.

This year for the first time, Bruce will guide them through the virtual lantern lighting ceremony as they tune in online on September 30.

Having lived for almost eight years with CLL, Bruce says his journey in many ways is just beginning and credits the support he receives to helping him navigate his diagnosis and treatment for blood cancer.

"I feel so lucky to be under the care of a strong team of blood cancer specialists and an extended family who are concerned about me physically but also emotionally.

[READ MORE](#)



**Shelley Hancock MP**  
MEMBER FOR SOUTH COAST



**MEDIA RELEASE**

Tuesday, 23 August 2022

## **POLICE NUMBERS BOOST TARGETS RURAL CRIME**

The NSW Police Force response to rural crime on the South Coast will be bolstered with Rural Crime Investigator positions rolling out across the South Coast as part of the biggest increase in police numbers in more than 30 years.

Member for South Coast, Shelley Hancock MP said the new position will see the South Coast with a unit of Rural crime specialist investigators focus on a range of crime, whether it's theft of stock, grain or wool, rural arson and fraud, firearm offences, cruelty to animals or trespassing.

Deputy Premier and Minister for Police Paul Toole said the positions deliver on the NSW Government's \$583 million commitment to community safety through the roll-out of 1,500 extra police positions over four years.

"These crimes affect farmers, their families and entire livelihoods, so it's critical we have the support and resources needed to ensure regional communities continue to thrive," Mr Toole said.

"These investigators have lived and worked on the land, and continue to play a critical role in building positive relationships between police and the farming community, as well as supporting victims of crime."

**For more information contact the Office of Shelley Hancock MP  
4421 0222 [www.shelleyhancockmp.com.au](http://www.shelleyhancockmp.com.au)**



# In Your Neighbourhood

Coastal Management Program



**As part of the Open Coast and Jervis Bay Coastal Management Program, we're inviting you to provide feedback on actions developed to protect our coastline for the next ten years.**

**Please complete online surveys here: [bit.ly/scc-cmp-stage3](https://bit.ly/scc-cmp-stage3)**

**Or, you can come to one of our drop in sessions:**

**Ulladulla Civic Centre**

**Date: Tuesday 6 Sept**

**Times: 2pm – 4pm & 5pm – 7pm**

**Huskisson Community Hall**

**Date: Wednesday 7 September**

**Times: 2pm – 4pm & 5pm – 7pm**

**Shoalhaven Entertainment Centre – Nowra**

**Date: Thursday 8 September**

**Times: 2pm – 4pm & 5pm – 7pm**

**HAVE YOUR SAY ON THE OPEN COAST AND  
JERVIS BAY COASTAL MANAGEMENT PLAN**

## The Sanctuary Point Men's Shed Inc.



**President:**

**Ray Marcusson 4447 8634**

**Secretary:**

**John Kelly 0413 837 538**

**Hours of Business 9.00am. - 3.00pm.  
Monday, Wednesday & Thursday...  
Phone the office on (02) 44438239 on  
these days, or call at the big green  
shed located at  
17 Clifton Street, Sanctuary Point  
NSW 2540 and Say Hello Mate!**

**Web Site at:**

<https://www.sanctuarypointmenshed.org/>



**THE COUNTRY CLUB**  
*St Georges Basin*

**Meetings are on the 2nd Thursday  
of every month in the upstairs  
function room from 10am-12pm.  
Everyone is welcome to join us for  
morning tea & a chat.**

**If you require more  
information, please contact**

**Di on 4443 3275**

**Or contact us on our Web Site**

<https://bayandbasincancersupportgroup.org.au/>

**MAJOR CORPORATE EXPERIENCE  
FOR YOUR BUSINESS OR HOME COMPUTER**

**CMS**  
COMPUTERS MADE SIMPLE

[www.computermadesimple.com.au](http://www.computermadesimple.com.au)



**LOCALLY** Owned &  
Operated

**4443 7732**



**Michael King**

*Bachelor of Mathematics  
With Computer Science*

*Senior System Analyst*

**02 4443 7732**

*Computers Made Simple Pty Ltd*

[mking@computermadesimple.com.au](mailto:mking@computermadesimple.com.au)

## BAY AND BASIN TREE SERVICE

- Tree removal
- Tree trimming
- Block clearing
- Chipping service
- Hedge trimming
- Stump grinding
- Mulch supply
- Firewood

**Free Quotes  
Competitive rates  
Fully insured**

**Qualified Arborist - Cert III  
17 years experience**

**0414801730**

**Email:** [bayandbasintreeservice@gmail.com](mailto:bayandbasintreeservice@gmail.com)

**Wayne  
Beehag**





WHAT'S ON [View More Online](#)



Box Office Enquiries 02 4429 5757

[info@shoalhavenentertainment.com.au](mailto:info@shoalhavenentertainment.com.au)

SHOW DINING AVAILABLE



Add a beautiful two course lunch after the show! Seasonal menu made fresh with local produce.

## With Love, Amadeus

### FINE MUSIC & THEATRE

Sat 24 Sep

Uncovering the private life of Mozart through his letters and his music starring two legendary performers - John Bell & Simon Tedeschi.

[READ MORE](#)

RUNNING TIME

Approx. 75 mins

RECOMMENDED FOR

All ages

+ ADD SHOW DINING

from \$49

TICKET PRICE

\$45 - \$55



## The Australian Tenors

Classical • Sun 18 Sep

Five truly authentic Australian tenor voices.

[READ MORE](#)

RUNNING TIME

Approx. 2 hrs 30 mins

RECOMMENDED FOR

All ages

+ ADD SHOW DINING

from \$34

TICKET PRICE

\$65 - \$71



Supporting local communities

For emergency help in flood, storm and tsunami call 132 500

www.ses.nsw.gov.au

**132 500 NSW SES St Georges Basin 41 Tasman Road**



**NSW SES St Georges Basin Unit**  
 4.9K followers • 51 following

**Welcome to NSW SES St Georges Basin Unit**

The NSW SES St Georges Basin Unit consists of a group of dedicated members of varying ages, from all walks of life with a wide variety of skills and experiences to offer. Each is individual but come together with a common goal, to assist their community in times of need.

The NSW SES offers members a wide range of training and equipment enabling us to help our community in a safe and professional manner.

Prepare now for flood, storm and tsunami



- 8 TIPS YOU CAN DO NOW TO PREPARE FOR STORMS**
- 1 Maintain your yard and balcony by securing or putting away items that could blow around in strong winds
  - 2 Clean your gutters, downpipes and drains regularly to prevent blockages
  - 3 Trim trees and branches that could potentially fall on your home or property
  - 4 Fix any damage to your roof including broken or missing tiles
  - 5 Check your insurance policy is current and adequate
  - 6 Make a plan for your family that outlines what you would do in an emergency
  - 7 Put together an emergency kit
  - 8 Listen to your local radio station and other media for weather warnings



- Your emergency kit contents**
- ✓ A portable radio with spare batteries
  - ✓ A torch with spare batteries
  - ✓ A first aid kit
  - ✓ Candles and waterproof matches
  - ✓ Important documents including emergency contact numbers
  - ✓ Copies of any emergency plans
  - ✓ A waterproof bag for valuables

- If you have to evacuate, add to your emergency kit**
- ✓ Medications
  - ✓ Supplies for your baby or any other people in your care
  - ✓ Appropriate clothing and footwear
  - ✓ Food and drinking water
  - ✓ Mobile phone wall and car charger

Keep your emergency kit in a waterproof storage box. Check your emergency kit regularly and restock any out-of-date items such as batteries.

For more information: [www.ses.nsw.gov.au](http://www.ses.nsw.gov.au)

**YOU TOO CAN BE A MEMBER, CONTACT YOUR LOCAL SES UNIT TODAY... AND SAY HELLO!**

**NSW SES St Georges Basin meet and train 6.30 pm Wednesdays**

**For further information on membership Please phone 1800 201 000**

#NSWSES FOR EMERGENCY HELP IN FLOOD, STORM AND TSUNAMI CALL 132 500



These five photos of Ridgeland Drive, Sanctuary Point were taken on the 2 Sept 2022 after I cleaned up the mess of the shoulder of



the road in front of our place at no. 3 which I might add is the responsibility of Shoalhaven Council to maintain and is also used by the morning school bus. The other photos were taken on the 31 July 2022 and apart from the removal of the unregistered van on the footpath and my own clean up of the shoulder in front of our place, the shoulder has been discontinued to be maintained by Shoalhaven Council, to become a bog mire of Grass and Mud, restricting the flow of storm water and encouraging motor vehicles to park on the bitumen of the narrow roadway instead of the grass infested mud ways of what should be Council maintained Road shoulders... Where is the pride of our neighbourhoods, when a council has lost control of their maintenance programs!

I have since contacted Council on the state of Vickery Ave, Sanctuary Point, a small avenue that has been resealed four times and since last done within the last six month, **the pot holes have returned and the break up of the bitumen continue to be a hazard to vehicles...**

**and a further lack of Pride in the place where we all call home!**

Wednesday 31 August 2022

## **LOCAL VOLUNTEERS RECOGNISED ON NATIONAL MEALS ON WHEELS DAY**

North Shoalhaven Meals on Wheels today celebrated National Meals on Wheels Day by acknowledging the extraordinary efforts of its over 250 volunteer and paying tribute to a local volunteer who has given more than 12 years of service to the local community.

Director of North Shoalhaven Meals on Wheels Luke Sikora said without the army of volunteers working across the organisation's kitchens; cooking, packing and delivering meals, the service simply wouldn't exist.

"We have been operating in the Shoalhaven for more than 40 years, delivering nourishing meals directly to people's homes. But the benefits of Meals on Wheels go beyond the meals itself, we help Shoalhaven residents remain socially engaged and connected to our local community at a time when they need it the most," Mr Sikora said.

"Our volunteers are at the heart of what we do each and every day. We often hear of the impact North Shoalhaven Meals on Wheels makes to the people we serve, but meaningful volunteering also has a direct benefit to our wellbeing and sense of belonging.

"North Shoalhaven Meals on Wheels is forever grateful to its volunteers and today on National Meals on Wheels Day we thank them for their dedication and support. Without their help, we would not be able to support the health, independence and connection of people within our community."

Long-term volunteer with Nowra Bomaderry Meals on Wheels Yadida Sekel was recognised with a special tribute after over a decade's service to the organisation.

"Yadida has been an instrumental part of the Nowra Bomaderry Meals on Wheels service for over 12 years, and has been behind some of the organisation's most successful programs aimed at bringing older and vulnerable members of the local community together," Mr Sikora said.

Yadida Sekel joined Meals on Wheels as a volunteer when she moved to the Shoalhaven in 2010. She immediately commenced work with the Nowra Bomaderry service, initially delivering meals, then in roles of Volunteer Coordinator, Function Organiser, and Wheels to Meals Coordinator. Yadida also served in the role of Secretary of the Nowra Bomaderry Meals on Wheels Service for five years and filled in multiple committee positions when there was a vacancy. A skilled writer, Yadida secured multiple grants for the organisation and produced information brochures to volunteers and clients.

"The Wheels to Meals program has been operating in the Nowra region for five years and brings members of the local community together each month for lunch with transport and meals costs subsidised. Throughout this time the program has been spearheaded by Yadida, who not only has been successful in obtaining important funding to run the program, but has personally arranged each and every event, ensuring they were a success.

"This year will be Yadida's last with the organisation as she aims to spend more time with her family. Today we take this opportunity to pay tribute to Yadida's service, and that of her husband Kevin, and acknowledge the contribution they have both made not only to Meals on Wheels, but to our local community," Mr Sikora said.

**MEDIA CONTACT: Luke Sikora 0423 437 166**

**Photograph attached: members of the Nowra Bomaderry Meals on Wheels Committee, including Service Manager Luke Sikora and North Shoalhaven Meals on Wheels Manager Angela Pendlebury presenting Yadida Sekel with a certificate of appreciation**



## Alcohol interlock devices reduce repeat drink driving

**Release Date:** Tuesday, 9 August 2022

Links to report summary:-

[The effectiveness of alcohol interlocks in reducing repeat drink driving and improving road safety](#)

[Predictors of commencement and completion of the NSW Mandatory Alcohol Interlock Program](#)

A new study by the Bureau of Crime Statistics and Research (BOCSAR) has found that breath test devices installed in the vehicles of high-range drink drivers significantly reduces repeat drink-driving.

Since 2015, the Mandatory Alcohol Interlock Program (MAIP) has allowed NSW courts to order high-range and repeat drink drivers to install an alcohol interlock breath test device in their cars, trucks or motorcycles (or face a 5-year disqualification period). The alcohol interlock device prevents the vehicle's ignition from starting if it detects alcohol in the driver's breath.

BOCSAR compared outcomes for 3,273 first-time high-range drink drivers who took up interlock devices with 5,367 first-time mid-range offenders who recorded a BAC just below the high-range threshold and were therefore ineligible for a device.

The study found that high-range drink drivers were:

- 86% less likely to commit a new drink driving offence while the device was installed; and
- Slightly less likely to commit a further drink driving offence in the 2 years after the interlock was removed.

There was no impact on driving while disqualified or road crashes, despite MAIP enabling offenders to return to driving sooner.

"Research suggests that high-risk drink drivers are less likely to comply with traditional court-imposed sanctions, leading to higher rates of driving whilst disqualified and alcohol-related crashes" said Jackie Fitzgerald, Executive Director of the Bureau of Crime Statistics and Research. "Given the accumulating evidence for their effectiveness, increasing the uptake of alcohol interlocks should be a priority for government".

**Further enquiries:** Jackie Fitzgerald, Executive Director, BOCSAR 0423 139 687

**Email:** [bcsr@justice.nsw.gov.au](mailto:bcsr@justice.nsw.gov.au)

**Copies of the report:** [www.bocsar.nsw.gov.au](http://www.bocsar.nsw.gov.au)

Log on to the NSW Police Web Site for the “Tell us what you want SURVEY!”.

**SURVEY LOG ON**

<https://secure.peoplepulse.com.au/display.php?mid=2060116b2b887848336>

**If you think**

**something is Wrong... Help them to help us! Contact your Local Police Station... Or Phone it in when you know it is wrong!**

Shoalhaven Local Area Command Police Telephone Contact List In the case of an Emergency Phone : 000		
Position	Location	Phone Number
Bay & Basin Police Station	Sanctuary Point	Phone: 02 44421899
Bay & Basin Police Station	Sanctuary Point	Fax: 02 44421811
Crime Prevention Officer	Nowra Police Station	02 44219619
Nowra Police Station	Nowra - Main switch	02 44219699
Sussex Inlet Police Station	Sussex Inlet	02 44468880
Police Assistance Line	PAL	13 14 44
Police Assistance Line TTY Hearing / speech impaired only	PAL	02 92113776
Crime Stoppers	Crime Stoppers	1800333000

NSW POLICE FORCE website address [www.police.nsw.gov.au](http://www.police.nsw.gov.au)

SHOALHAVEN LAC FACEBOOK PAGE   
 <https://www.facebook.com/ShoalhavenLac>

Where no emergency exists and immediate investigation by a Police officer is not necessary, registered community members can now create online reports such as Lost Property, Intentional Damage or Graffiti and Theft, in their own time anywhere where an internet connection is present, using devices of today's technology.

NSW Police Community PORTAL — Check it out for yourself

[http://www.police.nsw.gov.au/community\\_portal/about-the-portal](http://www.police.nsw.gov.au/community_portal/about-the-portal)

**for the SAFETY OF LIFE AT SEA**

**When you are going on the waters, of the St. Georges Basin... Don't forget to log on and off with Marine Rescue Sussex Inlet, for the safety of your life on the water. (27 MHz Chn: 88 VHF Chn: 16) Or Telephone: 4441 3555.**



The above Notice is inserted by the Editor as a Community Service for **SUSSEX INLET**



**POLICE ASSISTANCE LINE... 131 444** For reporting of non urgent matters, It will be recorded as an Incident and passed on to the appropriate Police Station to follow up ... It will also become a Statistic and they can be used for the allocation of Police in your local area.

**EMERGENCY ... 000** and ask for Police. For Life Threatening or Immediate Attention Required.

**CRIME STOPPERS ... 1800 333 000** Anonymous Information.

**When you have had enough!...Remember... If you really want to stop Crime... Commit yourself to a SIGNED STATEMENT and you will REALLY give your POLICE something to WORK WITH!**

Inserted by the Editor as a Community Service for **Shoalhaven LAC**